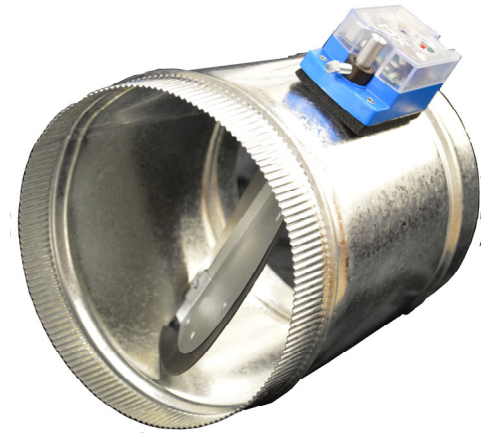


Modulating Bypass Damper with Static Pressure Controller

- DEPENDABLE POWER OPEN/POWER CLOSE
- LED INDICATORS FOR FULL OPEN AND CLOSED POSITIONS
- LED INDUCATORS FLASH WHEN BLADE IS MOVING
- INSULATION PAD UNDER MOTOR
- AVAILABLE SIZES: 8", 10", 12", 14", 16" & 18"
- LONG-LIFE ACTUATOR
- 5 YEAR FACTORY WARRANTY



GENERAL DESCRIPTION

The XCI Modulating Bypass damper was developed for precise control of bypass air in the HVAC duct system. The solid aluminum shaft provides years of reliability. The damper actuator with built-in LED lights is designed for years of care-free operation. The power open/power close design guarantees precise control of bypass air into the return. Poron® rubber blade edges provides a positive seal for the blade. **Our gasketed damper blade is designed to compensate when installation conditions are not exact and the damper is not perfectly round.** Long-life nylon bushings insure a quiet, low friction operation of the damper. Heavy-duty galvanized steel spiral cylinder provides strength to keep the damper round. One crimped end and one straight end allows for flexible installation. The static pressure controller "modulates" the damper open and close to maintain the desired static pressure in the supply air plenum.

- **QUALITY DESIGN**
- **SUPERIOR FEATURES**
- **FLEXIBLE INSTALLATION**

SPECIFICATIONS

Power	24VAC, 2 VA typical (3 VA Max)
Actuator	XCI POCM Brushless Motor Design 10 in-lb Torque Power-Open/Power-Close 30 Second Operation Cycle Max 90 Degree Travel
Indicator	LED Indicates Full Open or Close Blinks When Opening & Closing
Wiring	3 Screw Terminals PO, PC, Common Use 18/3 Solid Core Wire



Part Number	D <i>Cylinder</i> <i>Diameter</i> (Inches)	L <i>Cylinder</i> <i>Length</i> (Inches)
MBD08	8	12
MBD10	10	12
MBD12	12	12
MBD14	14	14
MBD16	16	16
MBD18	18	18

