

PRODUCT INFORMATION PACKET

FASCO®

Model No: D1154
Catalog No: D1154

OEM Replacement Motor, 1/20 HP, 1 Ph, 60 Hz, 208-230 V, 1550 RPM, 1 Speed, 3.3" Diameter, OAO



Regal and Fasco are trademarks of Regal Rexnord Corporation or one of its affiliated companies.
©2022 Regal Rexnord Corporation, All Rights Reserved. MC017097E

RegalRexnord



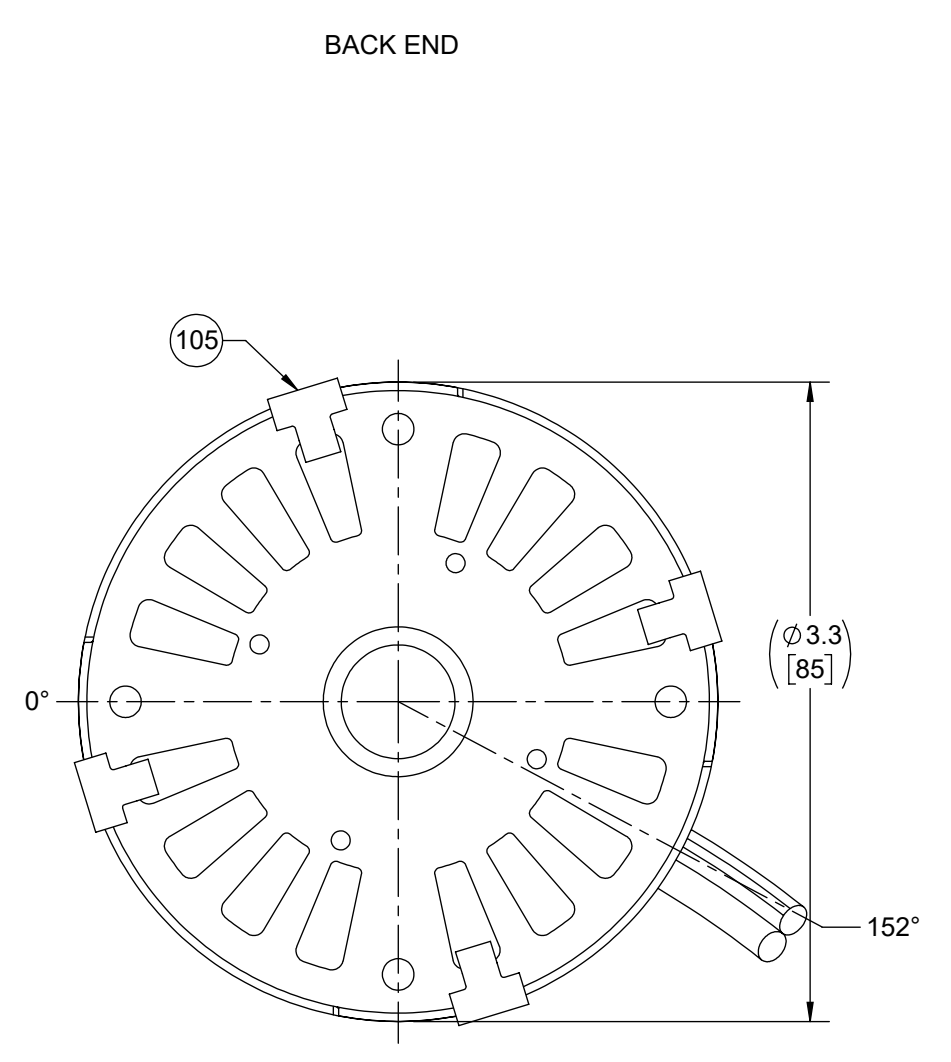
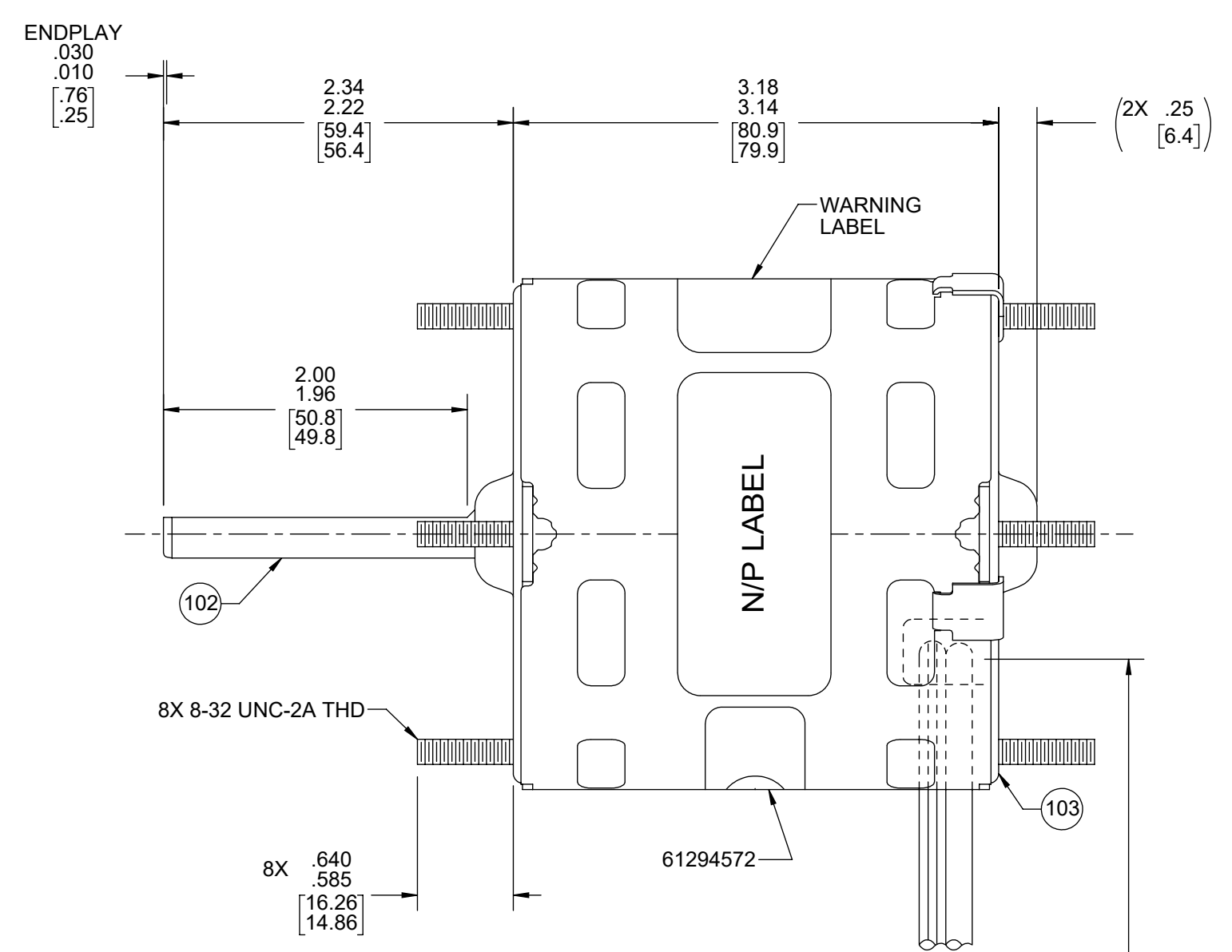
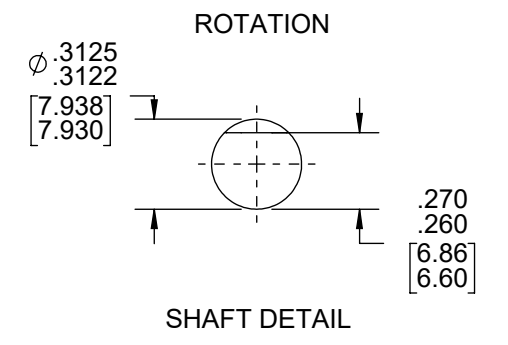
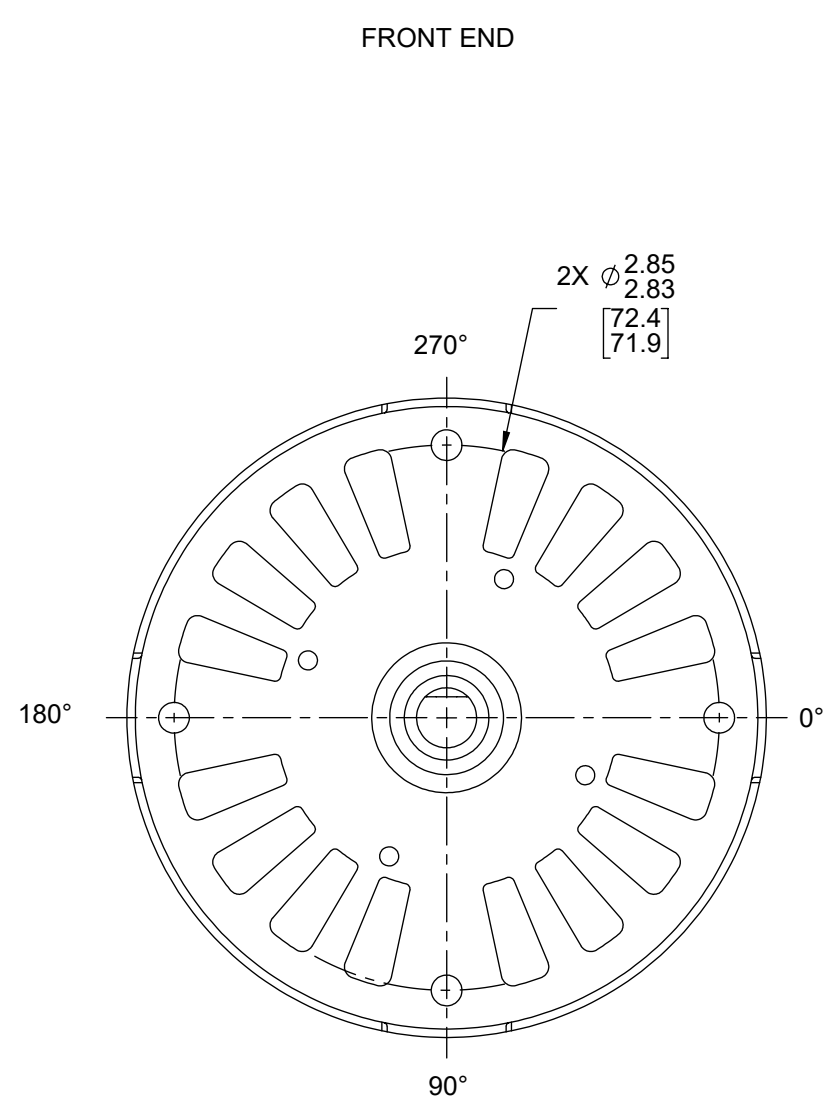
Nameplate Specifications

Output HP	1/20 Hp	Output KW	0.04 kW
Frequency	60 Hz	Voltage	208-230 V
Current	1.00 A	Speed	1550 rpm
Service Factor	1	Phase	1
Duty	Air Over	Insulation Class	B
Frame	3.3	Enclosure	Open Air Over
Thermal Protection	Thermally Protected	Ambient Temperature	40 °C
UL	Recognized	CSA	Y
CE	N	Number of Speeds	1

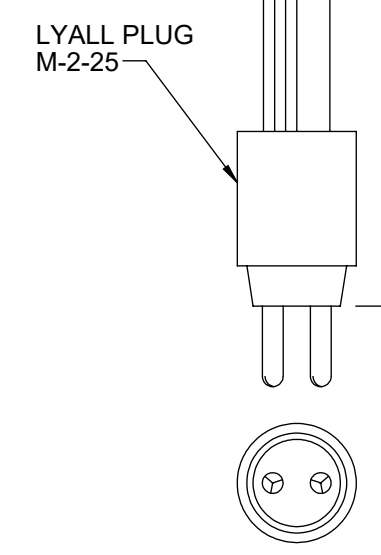
Technical Specifications

Electrical Type	Shaded Pole	Starting Method	Across The Line
Poles	4	Rotation	Clockwise Shaft End
Mounting	Extended Studs	Drive End Bearing	Sleeve
Opp Drive End Bearing	Sleeve	Frame Material	Steel
Shaft Type	Flat	Overall Length	5.77 in
Frame Length	2.95 in	Shaft Diameter	0.313 in
Shaft Extension	2.3 in		
Outline Drawing	71635973	Connection Drawing	NA

This is an uncontrolled document once printed or downloaded and is subject to change without notice. Date Created:11/29/2022

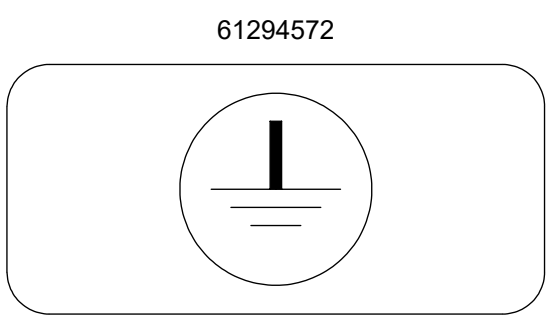


LEAD MATERIAL
18 GA. 105°C 4/64 INSUL.
THERMO., 2 COND.
PARALLEL, BLACK



SAFETY WARNING
This motor must be grounded in accordance with local or national electrical codes to prevent possible injury due to electrical shock

AVERTISSEMENT DE SÉCURITÉ
Ce moteur doit être fondée sur conformément à la réglementation locale ou national électrique codes pour prévenir d'éventuelles blessures en raison de choc électrique



NOTES:
1. PACK 270 MOTORS MAX. PER PALLET.

FASCO™

Assembled In Mexico
No. 71635973 TYPE U63B1 AO LR6319
208-230 V 60 Hz Class B
.90 A 1550 RPM
Model D1154 Max Amb: 40°C
Thermally Protected
Reference 1/20 HP

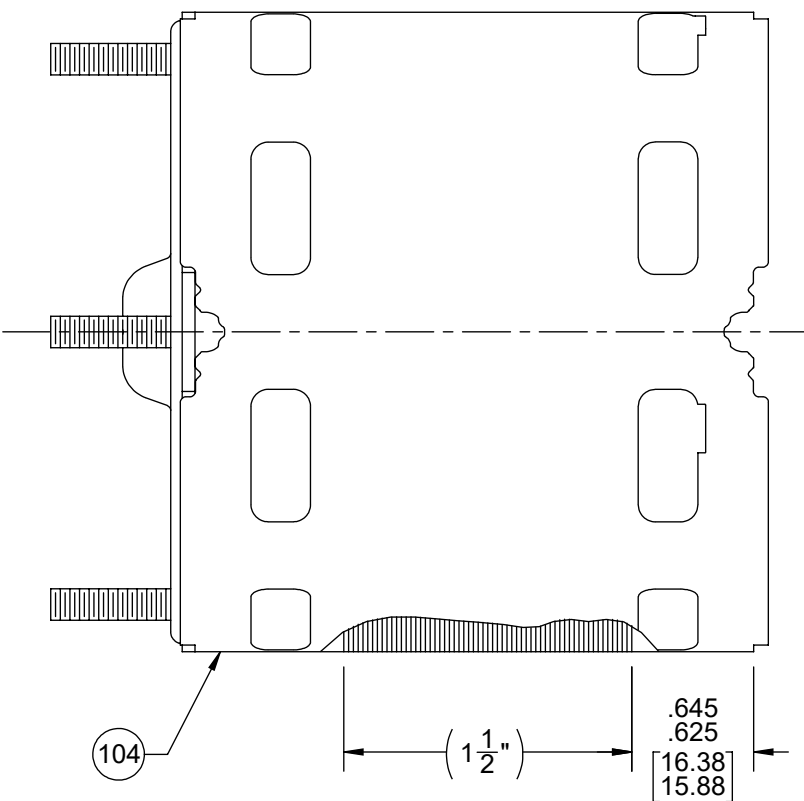
CUSTOMER:	FASCO DIST.	APPLICATION:					
CUSTOMER PN:	D1154	MOTOR WEIGHT:	3.75 LBS.				
		ENVIRONMENT:	DRY				
HORIZONTAL	MOTOR TYPE		REFERENCE SAMPLE				
	SHADED POLE						
	B 00	LA 63	FR 30				
		A V	S 06				
		C ON	E 5				
		B 3	A 0				
TYPICAL PERFORMANCE AT 230 VOLTS 60 HZ							
MOTOR SPEED	IDLE		LOADED		LOCKED		BREAK
	RPM	AMP	WATT	IN OZ	RPM	AMP	WATT
	1764	.74	84	36.2	1550	.90	134

DRAWING REVISION AE	REVISION BY MLS	REV DATE/DATE 8/1/2022	TOLERANCES (EXCEPT AS NOTED): DEC. INCH mm ANGLE .X ±0.1 [±3] ±1° .XX ±0.01 [±0.3] .XXX ±0.005 [±0.13] .XXXX ±0.0005 [±0.013]	DRAWN BY PLA	Regal Beloit America, Inc.
REQUEST NUMBER ECR-0219818	APPROVED BY KKM	DATE 8/1/2022	REMOVE BURRS & BREAK SHARP EDGES: .003/.015 [.08/.38] X 45° CORNER FILLETS: R.02 [5] MACHINED SURFACES: .125/ mm 3.2 mm DIMENSIONS IN [BRACKETS] INCH/mm ARE FOR REFERENCE ONLY	DATE 5/27/2015	
REQUEST NUMBER DESCRIPTION UPDATED FASCO LOGO ON NAMEPLATE LABEL				APPROVED BY MLS	DESCRIPTION OUTLINE MOTOR ASSY
COPYRIGHT (PER REVISION DATE) REGAL BELOIT AMERICA, INC. ALL RIGHTS RESERVED. PROPRIETARY AND CONFIDENTIAL INFORMATION - THIS DOCUMENT IS THE PROPERTY OF REGAL BELOIT AMERICA, INC. (OWNER) AND CONTAINS OWNER'S PROPRIETARY INFORMATION. ANY PERSON, CORPORATION OR OTHER FIRM RECEIVING IT IS DEEMED, BY RECEIVING IT, TO AGREE THAT IT, AND/OR ANY PART OF IT, SHALL NOT BE DISCLOSED TO ANY PERSON, CORPORATION OR OTHER ENTITY, DUPLICATED, AND/OR USED, EXCEPT AS EXPRESSLY APPROVED IN WRITING IN ADVANCE BY OWNER. THIS DOCUMENT SHALL BE RETURNED TO OWNER UPON REQUEST. IT MAY BE SUBJECT TO CERTAIN RESTRICTIONS UNDER APPLICABLE EXPORT CONTROL LAWS AND REGULATIONS.				DATE 5/27/2015	MATERIAL
				REFERENCE	PROCESS/FINISH BLACK
				THIRD ANGLE PROJECTION	SIZE C
				DRAWING NUMBER 71635973	SHEET 1 OF 2

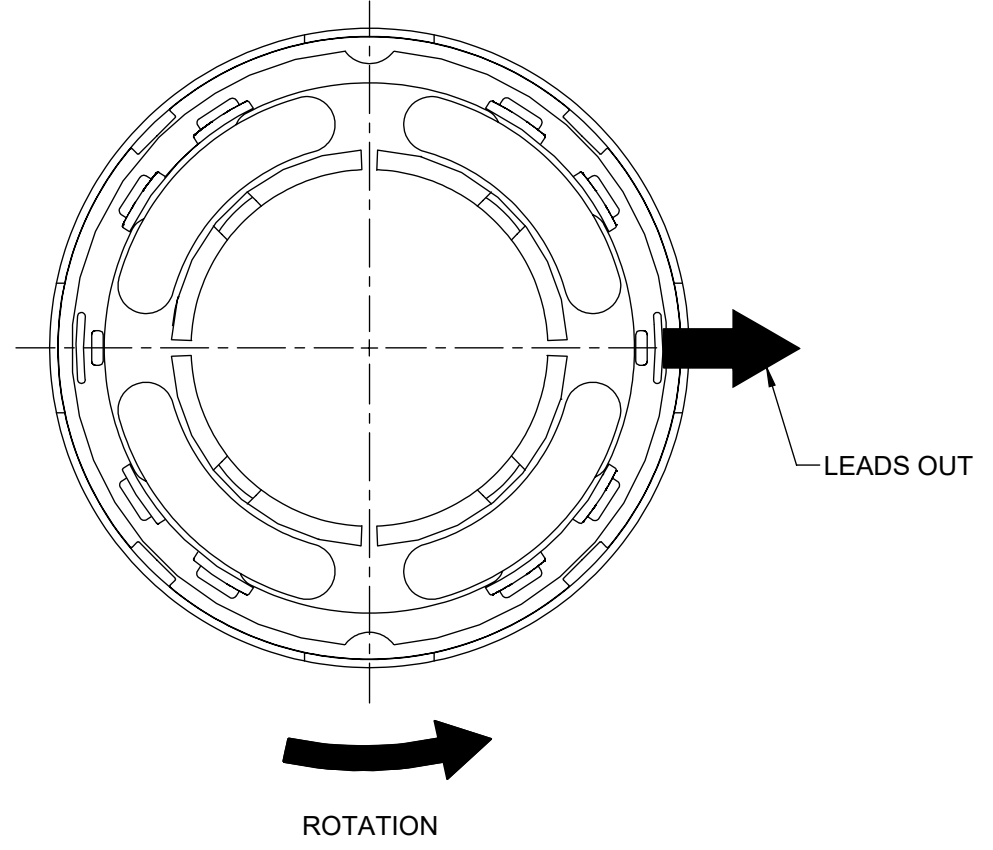
NOTES:

- 1. STAKE STATOR TO MAIN FRAME PER 88830264.
- 2. MAXIMUM TORQUE REQUIRED TO TURN MOTOR SHAFT IS 3/8 INCH-OUNCE.
- 3. MAKE-UP WASHERS ARE TO BE ADDED OR DELETE TO ACHIEVE REQUIRED ENDPLAY.
- 4. LEAD RIP MUST NOT EXTEND OUTSIDE OF MAIN FRAME.

FRONT END



BACK END



PACKING SPECIFICATIONS

- 1. PLACE FOAM RING ON BACK END OF MOTOR. PLACE FILLER TUBE OVER SHAFT EXTENSION AND PLACE IN CARTON.
- 2. CARTON LABELS MUST ALL FACE ONE DIRECTION TOWARD THE OPEN END OF THE PALLET. SEE 88834408.
- 3. NO PACKAGING TAPE OVER THE CARTON LABEL.
- 4. PLACE (1) FLAT PAD ON PALLET, (1) BETWEEN EACH LAYER AND (1) ON TOP. PLACE ALL INSPECTION STICKERS AND WRITING ON TOP OF FLAT PAD.
- 5. PACK 1 PER CONTAINER, 45 CONTAINERS PER LAYER, 270 MAX. PER PALLET, PER 88834200.

DRAWING REVISION AE	REVISION BY MLS	REV DATE/© DATE 8/1/2022	TOLERANCES (EXCEPT AS NOTED): DEC. INCH mm ANGLE	DRAWN BY PLA	Regal Beloit America, Inc.
REQUEST NUMBER ECR-0219818	APPROVED BY KKM	DATE 8/1/2022	.X ±0.1 [±3] ±1° .XX ±0.01 [±3] .XXX ±0.005 [±0.13] .XXXX ±0.0005 [±0.013]	DATE 5/27/2015	
REQUEST NUMBER DESCRIPTION UPDATED FASCO LOGO ON NAMEPLATE LABEL			REMOVE BURRS & BREAK SHARP EDGES: .003/.015 [.08/.38] X 45° CORNER FILLETS: R.02 [.5]	APPROVED BY MLS	DESCRIPTION OUTLINE MOTOR ASSY
<small>COPYRIGHT (PER REVISION DATE) REGAL BELOIT AMERICA, INC. ALL RIGHTS RESERVED. PROPRIETARY AND CONFIDENTIAL INFORMATION - THIS DOCUMENT IS THE PROPERTY OF REGAL BELOIT AMERICA, INC. ("OWNER") AND CONTAINS OWNER'S PROPRIETARY INFORMATION. ANY PERSON, CORPORATION OR OTHER FIRM RECEIVING IT IS DEEMED, BY RECEIVING IT, TO AGREE THAT IT, AND/OR ANY PART OF IT, SHALL NOT BE DISCLOSED TO ANY PERSON, CORPORATION OR OTHER ENTITY, DUPLICATED, AND/OR USED, EXCEPT AS EXPRESSLY APPROVED IN WRITING IN ADVANCE BY OWNER. THIS DOCUMENT SHALL BE RETURNED TO OWNER UPON REQUEST. IT MAY BE SUBJECT TO CERTAIN RESTRICTIONS UNDER APPLICABLE EXPORT CONTROL LAWS AND REGULATIONS.</small>			MACHINED SURFACES: .125/ mm 3.2 INCH/mm	DATE 5/27/2015	MATERIAL
			mm DIMENSIONS IN [BRACKETS] ARE FOR REFERENCE ONLY	REFERENCE	PROCESS/FINISH BLACK
				THIRD ANGLE PROJECTION	SIZE C
				DRAWING NUMBER 71635973	SHEET 2 OF 2