

# PRODUCT INFORMATION PACKET

FASCO®

Model No: D1103

Catalog No: D1103

OEM Replacement Motor, 1/20 HP, 1 Ph, 60 Hz, 208-230 V, 1500/1300 RPM, 1 Speed, 3.3" Diameter, OAO



Regal and Fasco are trademarks of Regal Rexnord Corporation or one of its affiliated companies.

©2023 Regal Rexnord Corporation, All Rights Reserved. MC017097E

RegalRexnord



### Nameplate Specifications

Phase	1	Output HP	1/20 Hp
Output KW	0.04 kW	Voltage	208-230 V
Speed	1500/1300 rpm	Frame	3.3
Enclosure	Open Air Over	Thermal Protection	Thermally Protected
Efficiency	31 %	Ambient Temperature	40 °C
Frequency	60 Hz	Current	1.15/1.35 A
Duty	Air Over	Insulation Class	B
UL	Recognized	CSA	Y
CE	N	Number of Speeds	1

### Technical Specifications

Electrical Type	Shaded Pole	Starting Method	Across The Line
Poles	4	Rotation	Counterclockwise Shaft End
Mounting	Extended Studs	Drive End Bearing	Sleeve
Opp Drive End Bearing	Sleeve	Frame Material	Steel
Shaft Type	Flat	Overall Length	5.58 in
Frame Length	2.82 in	Shaft Diameter	0.313 in
Shaft Extension	2.25 in		
Connection Drawing	NA	Outline Drawing	71634346

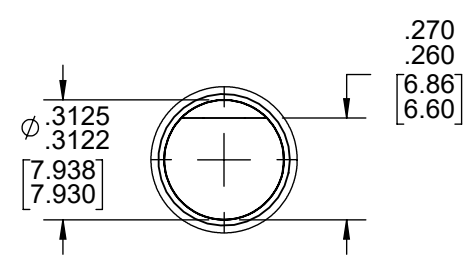
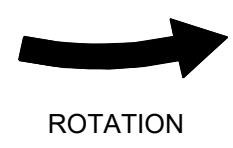
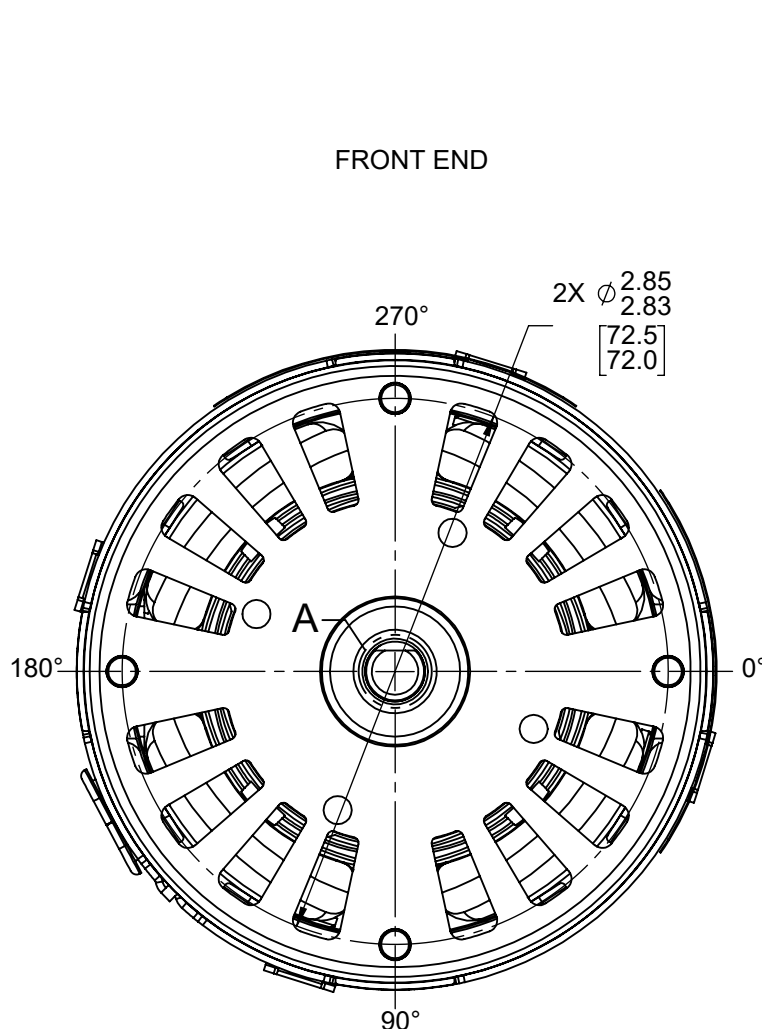
This is an uncontrolled document once printed or downloaded and is subject to change without notice. Date Created:11/14/2023

4

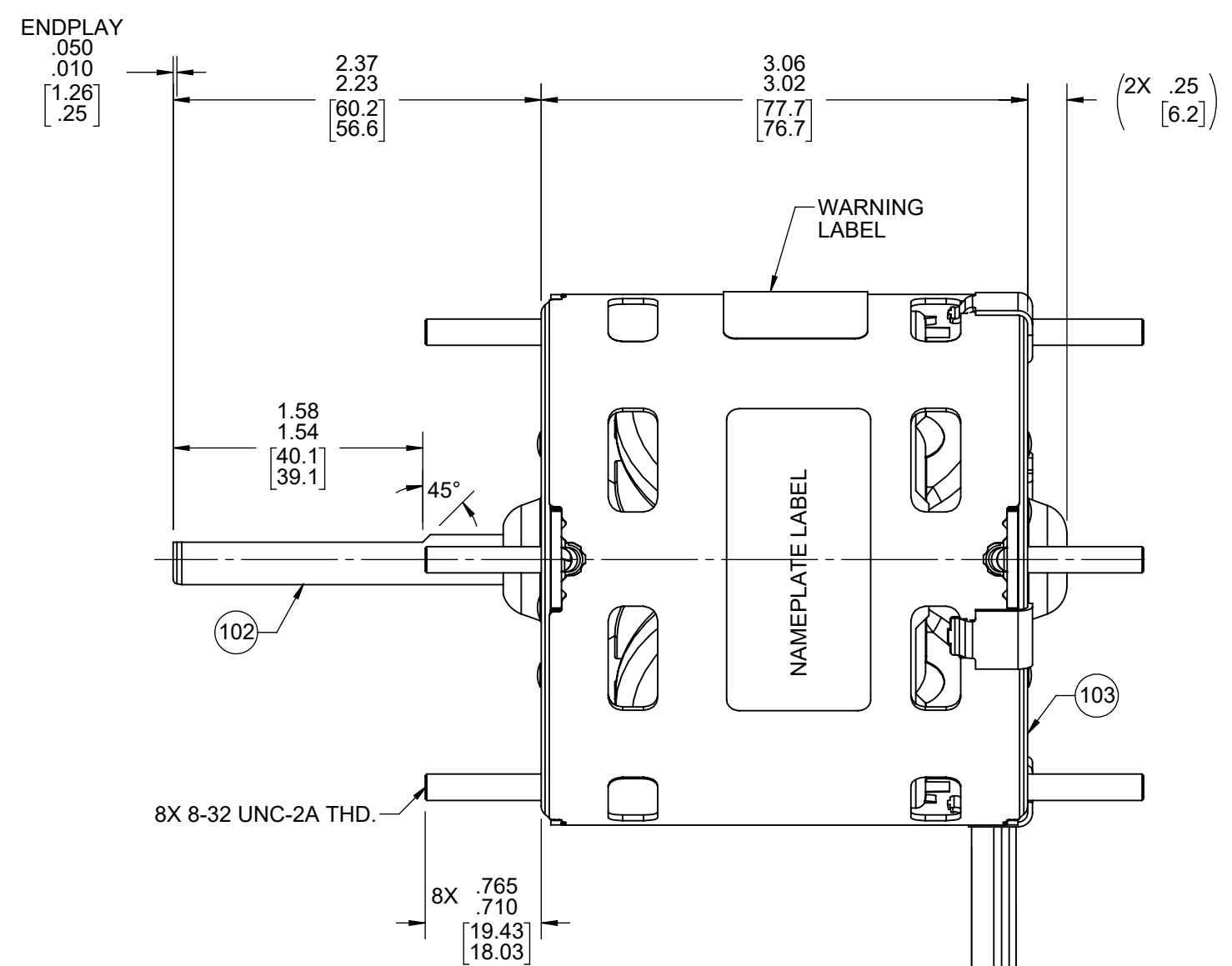
3

2

1



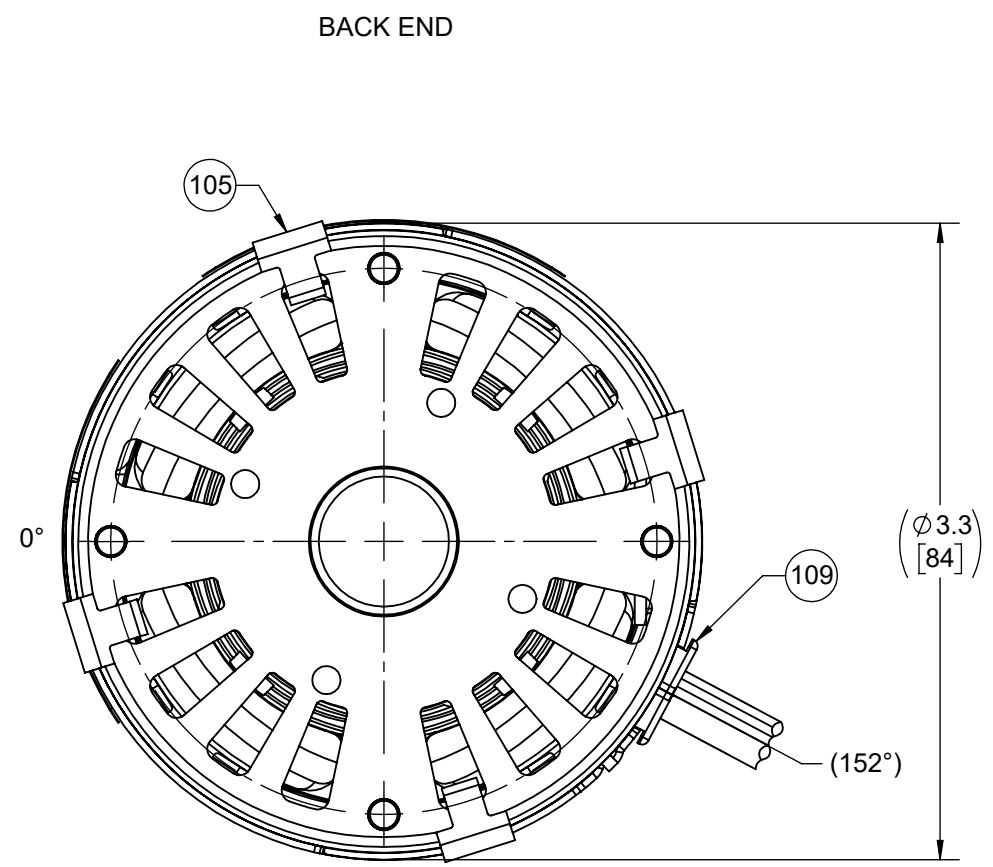
SHAFT DETAIL A



LEAD MATERIAL  
18 GA. 105°C 4/64 INSUL.  
CORDSET, 2-CONDUCTOR  
PARALLEL, BLACK, THERMO.  
16.00/14.00 [406.4/355.6]

LEADS TO BE MEASURED  
TO BACK OF PLUG

LYALL PLUG  
M-2-25



- NOTES:  
1. MOTOR HAS LOW TEMPERATURE OIL.  
2. NO PACKAGING TAPE OVER CARTON LABEL.

61305568

00464071

**SAFETY WARNING**  
This motor must be grounded in accordance with local or national electrical codes to prevent possible injury due to electrical shock

**AVERTISSEMENT DE SÉCURITÉ**  
Ce moteur doit être fondée sur conformément à la réglementation locale ou national électrique codes pour prévenir d'éventuelles blessures en raison de choc électrique

**FASCO™**

Assembled in Mexico  
No. 71634346 TYPE U63B1 T.P. AO  
208-230 V 60/50 Hz Class B  
1.15/1.35 A 1500/1300 RPM 1/20 HP  
Model D1103 Max Amb: 40°C  
LR6319

CUSTOMER:	FASCO DIST.	APPLICATION:	CONDENSER COIL FAN								
CUSTOMER PN:	D1103	MOTOR WEIGHT:	3.16 LBS								
		ENVIRONMENT:	DAMP								
HORIZONTAL	UP	MOTOR TYPE									
		SHADED POLE									
	B	LA	FR	A	S	C	E	B	A		
	00	63	30	V	05	CN	5	3	0		
	TYPICAL PERFORMANCE AT 230 VOLTS 60 HZ										
MOTOR SPEED	IDLE			LOADED			LOCKED		BREAK		
	RPM	AMP	WATT	IN OZ	RPM	AMP	WATT	IN OZ	AMP	WATT	IN OZ
	1766	.74	83	36.4	1500	.86	129	15.5	1.29	178	42.0

DRAWING REVISION AB	REVISION BY MLS	REV DATE/© DATE 7/27/2022	TOLERANCES (EXCEPT AS NOTED): DEC. INCH mm ANGLE .X ±0.1 [±3] ±1° .XX ±0.01 [±0.3] .XXX ±0.005 [±0.13] .XXXX ±0.0005 [±0.013]	DRAWN BY PLA		Regal Beloit America, Inc.
REQUEST NUMBER ECR-0219742	APPROVED BY KKM	DATE 7/27/2022	REMOVE BURRS & BREAK SHARP EDGES: .003/.015 [ .08/.38] X 45° CORNER FILLETS: R.02 [ .5] MACHINED SURFACES: .125 / mm 3.2 INCH / mm mm DIMENSIONS IN [BRACKETS] ARE FOR REFERENCE ONLY	DATE 7/20/2021		
REQUEST NUMBER DESCRIPTION UPDATED FASCO LOGO ON NAMEPLATE LABEL				APPROVED BY MLS	DESCRIPTION OUTLINE MOTOR ASSY	
COPYRIGHT (PER REVISION DATE) REGAL BELOIT AMERICA, INC. ALL RIGHTS RESERVED. PROPRIETARY AND CONFIDENTIAL INFORMATION - THIS DOCUMENT IS THE PROPERTY OF REGAL BELOIT AMERICA, INC. (OWNER) AND CONTAINS OWNER'S PROPRIETARY INFORMATION. ANY PERSON, CORPORATION OR OTHER FIRM RECEIVING IT IS DEEMED, BY RECEIVING IT, TO AGREE THAT IT, AND/OR ANY PART OF IT, SHALL NOT BE DISCLOSED TO ANY PERSON, CORPORATION OR OTHER ENTITY, DUPLICATED, AND/OR USED, EXCEPT AS EXPRESSLY APPROVED IN WRITING IN ADVANCE BY OWNER. THIS DOCUMENT SHALL BE RETURNED TO OWNER UPON REQUEST. IT MAY BE SUBJECT TO CERTAIN RESTRICTIONS UNDER APPLICABLE EXPORT CONTROL LAWS AND REGULATIONS.				DATE 7/20/2021	MATERIAL	PROCESS/FINISH BLACK
THIRD ANGLE PROJECTION			SIZE C	DRAWING NUMBER 71634346	SHEET 1 OF 2	

61299553

4

3

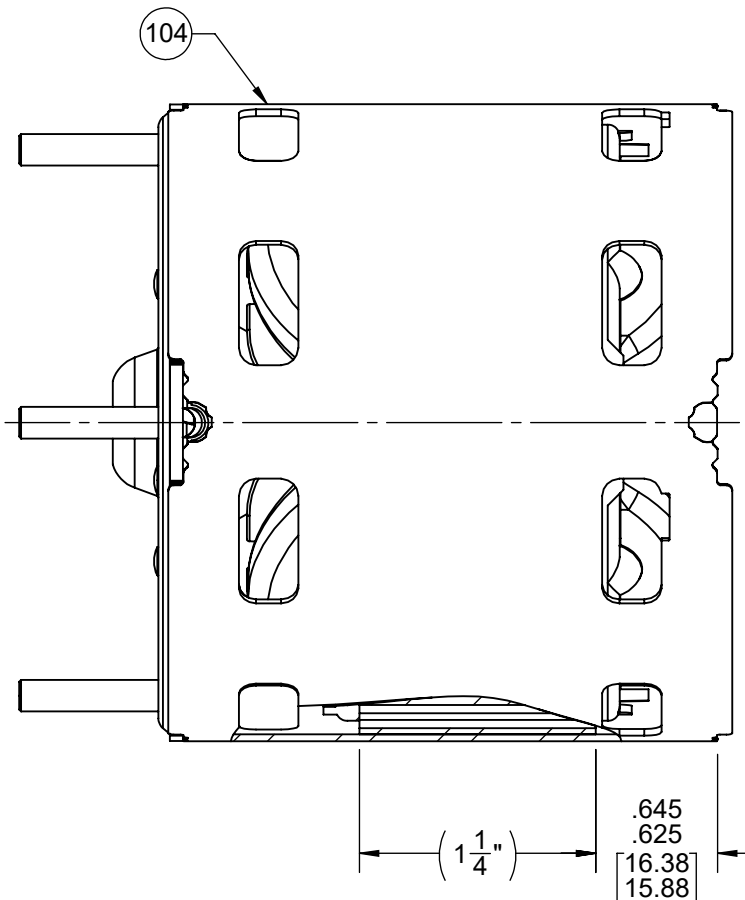
2

1

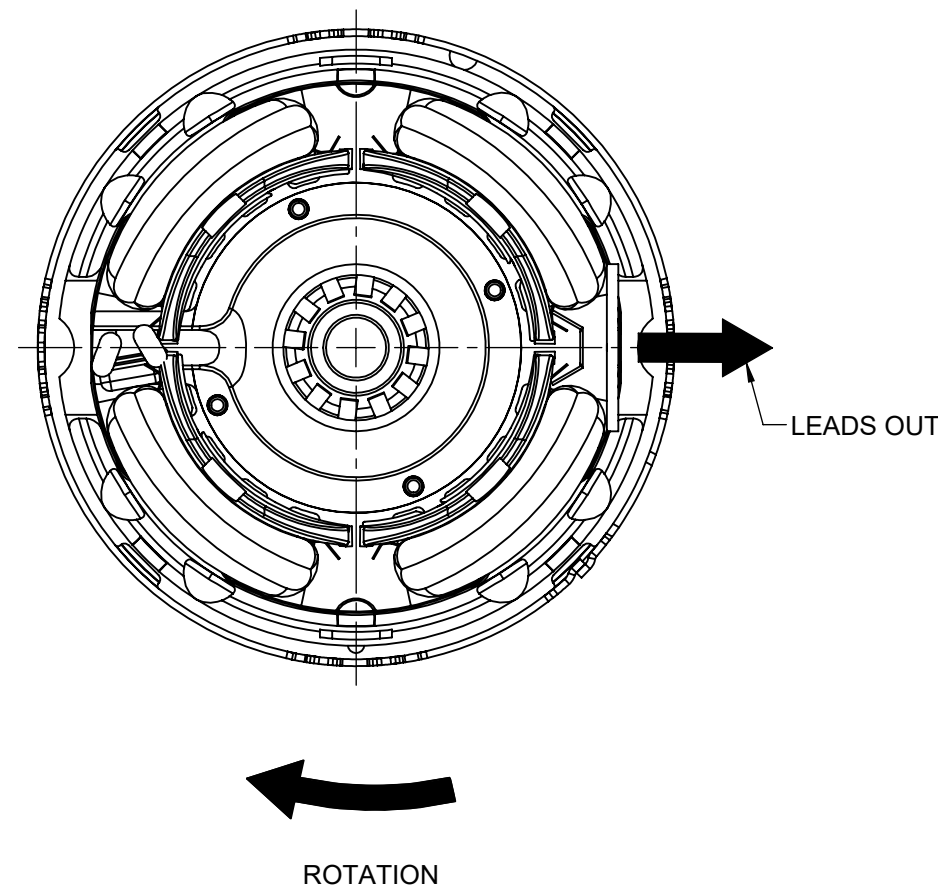
NOTES:

1. STAKE STATOR TO MAIN FRAME PER 88830264.
2. MAXIMUM TORQUE REQUIRED TO TURN MOTOR SHAFT IS 3/8 INCH-OUNCE.
3. MAKE-UP WASHERS ARE TO BE ADDED OR DELETED TO ACHIEVE REQUIRED ENDPLAY.
4. LEAD RIP ON FASCO END MUST NOT EXTEND OUTSIDE OF MAIN FRAME.

FRONT END



BACK END



PACKING SPECIFICATIONS

1. PACK 1 PER CARTON, 45 CARTONS PER LAYER, 6 LAYERS PER PALLET, 270 MAX. PER PALLET. PACK PER 88834200.
2. PLACE FOAM RING ON BACK END OF MOTOR. PLACE FILLER TUBE OVER SHAFT EXTENSION AND PLACE IN CARTON SHAFT UP. PLACE (4) NUTS IN PLASTIC BAG AND PLACE (1) BAG IN EACH CARTON. CLOSE FLAPS AND TAPE.
3. PLACE CARTON LABEL ON SHAFT END OF CARTON. CARTON LABELS MUST ALL FACE ONE DIRECTION TOWARD OPEN END OF THE PALLET. PER 88834408.
4. PLACE ONE FLAT PAD ON PALLET, PLACE ONE FLAT PAD BETWEEN EACH LAYER AND ONE ON TOP. PLACE ALL INSPECTION STICKERS AND WRITING ON TOP OF FLAT PAD.

DRAWING REVISION AB	REVISION BY MLS	REV DATE/© DATE 7/27/2022	TOLERANCES (EXCEPT AS NOTED): DEC. INCH mm ANGLE	DRAWN BY PLA	Regal Beloit America, Inc.
REQUEST NUMBER ECR-0219742	APPROVED BY KKM	DATE 7/27/2022	.X ±0.1 [±3] ±1° .XX ±0.01 [±0.3] .XXX ±0.005 [±0.13] .XXXX ±0.0005 [±0.013]	DATE 7/20/2021	
REQUEST NUMBER DESCRIPTION UPDATED FASCO LOGO ON NAMEPLATE LABEL			REMOVE BURRS & BREAK SHARP EDGES: .003/.015 [.08/.38] X 45° CORNER FILLETS: R.02 [.5] MACHINED SURFACES: .125/ mm 3.2 INCH/mm	APPROVED BY MLS	DESCRIPTION OUTLINE MOTOR ASSY
<small>COPYRIGHT (PER REVISION DATE) REGAL BELOIT AMERICA, INC. ALL RIGHTS RESERVED. PROPRIETARY AND CONFIDENTIAL INFORMATION - THIS DOCUMENT IS THE PROPERTY OF REGAL BELOIT AMERICA, INC. ("OWNER") AND CONTAINS OWNER'S PROPRIETARY INFORMATION. ANY PERSON, CORPORATION OR OTHER FIRM RECEIVING IT IS DEEMED, BY RECEIVING IT, TO AGREE THAT IT, AND/OR ANY PART OF IT, SHALL NOT BE DISCLOSED TO ANY PERSON, CORPORATION OR OTHER ENTITY, DUPLICATED, AND/OR USED, EXCEPT AS EXPRESSLY APPROVED IN WRITING IN ADVANCE BY OWNER. THIS DOCUMENT SHALL BE RETURNED TO OWNER UPON REQUEST. IT MAY BE SUBJECT TO CERTAIN RESTRICTIONS UNDER APPLICABLE EXPORT CONTROL LAWS AND REGULATIONS.</small>			THIRD ANGLE PROJECTION	DATE 7/20/2021	MATERIAL
				SIZE C	PROCESS/FINISH BLACK
				DRAWING NUMBER 71634346	SHEET 2 OF 2

4

3

2

1