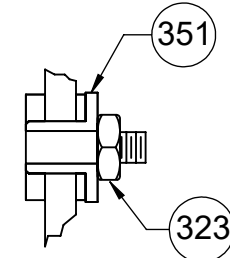


APPLICATION:	FURNACE DRAFT INDUCER	B	LA	FR	A	S	C	E	B	A
CUSTOMER:	FASCO DIST	12	21	33	V	04	EG	6	1	0
CUSTOMER PN:	A146	FINISH: BLOWER - NATURAL, MOTOR - FLAT BLACK								

LEAD MATERIAL
18 GA. 125°C 4/64 INSUL.
X-LINKED POLY. RED,
WHITE, AND BLACK
7.00/5.00 [177.8/127.0]
W/ PIN TERMINALS
AMP 350538-1

GROUND LEAD MATERIAL
18 GA. 125°C 2/64 INSUL.
X-LINKED POLY. GRN/YEL
18.00/16.00 [457.2/406.4]
W/ RING TERMINAL
AMP 40955

- NOTES:
1. 100% HYPOT 1500 V FOR 1 SECOND.
 2. AUDIT VIBRATION PERIODICALLY TO INSURE .0025 [.064] MAXIMUM DISPLACEMENT.
 3. NO STALOC REQUIRED ON IMPELLER OR FAN.
 4. IMPELLER DIMENSION WITH END PLAY PUSHED TOWARD MOTOR.
 5. INSPECTION TEST FIXTURE IS REQUIRED.
 6. PACK 1 PER CONTAINER, 16 CONTAINERS PER LAYER, 5 LAYERS PER PALLET, 80 MAX. PER PALLET
 7. PACKING ASSY. 87854335, PER 88834200 AND 88834408.
 8. CARTON LABELS MUST ALL FACE ONE DIRECTION TOWARD THE OPEN END OF THE PALLET.
SEE 88834408.
 9. NO PACKAGING TAPE OVER CARTON LABEL.



MOTOR MOUNTING DETAIL

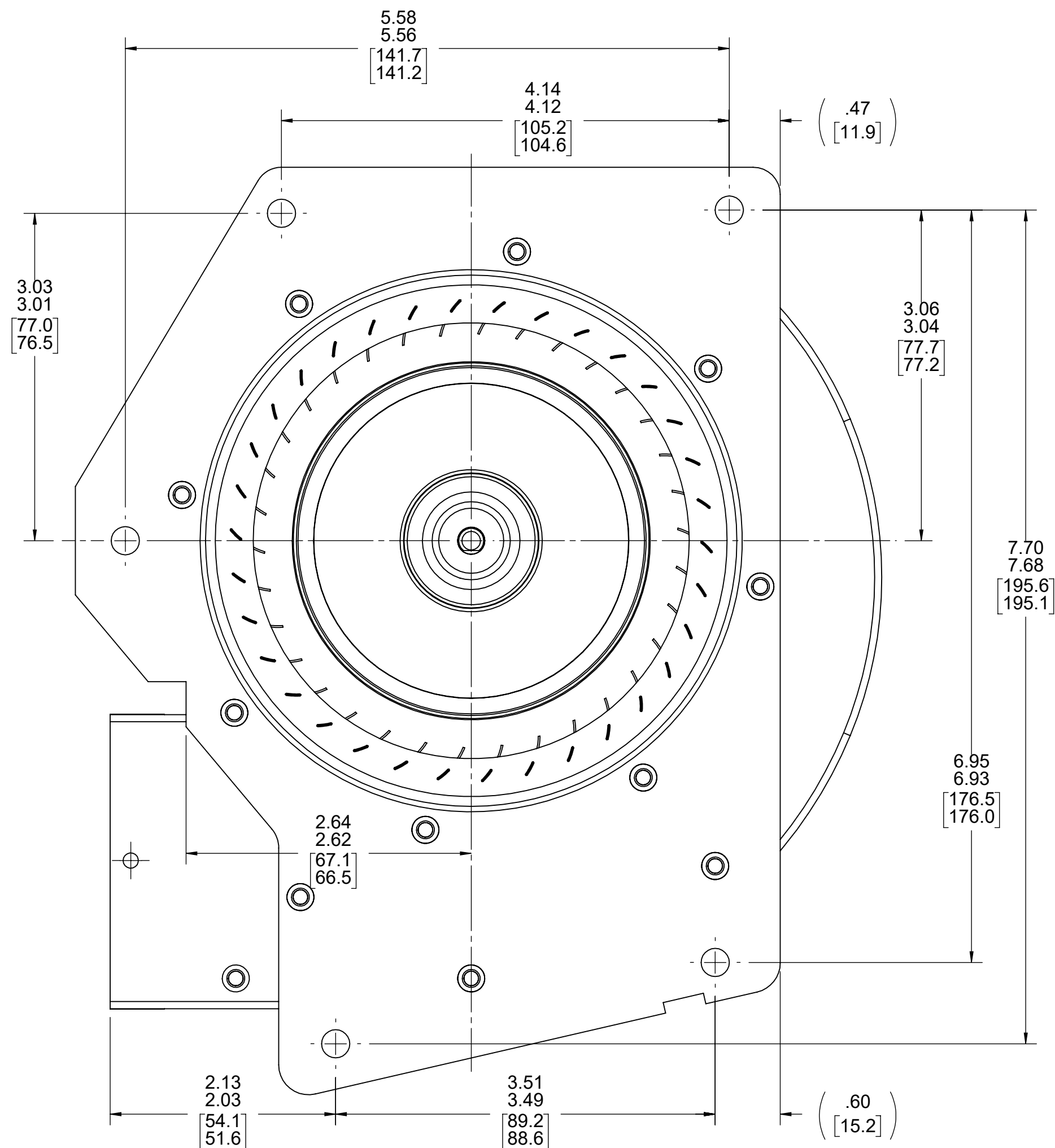
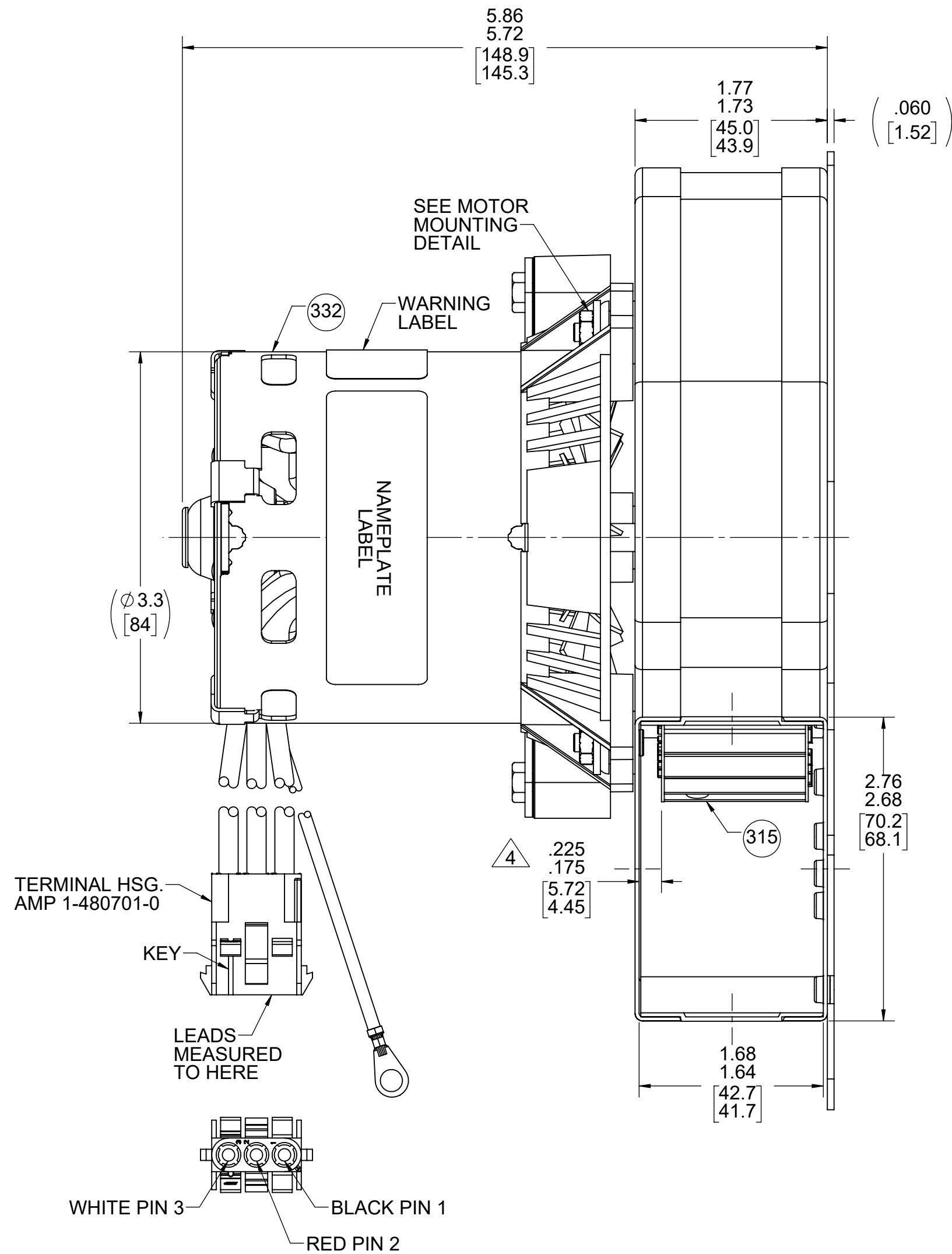
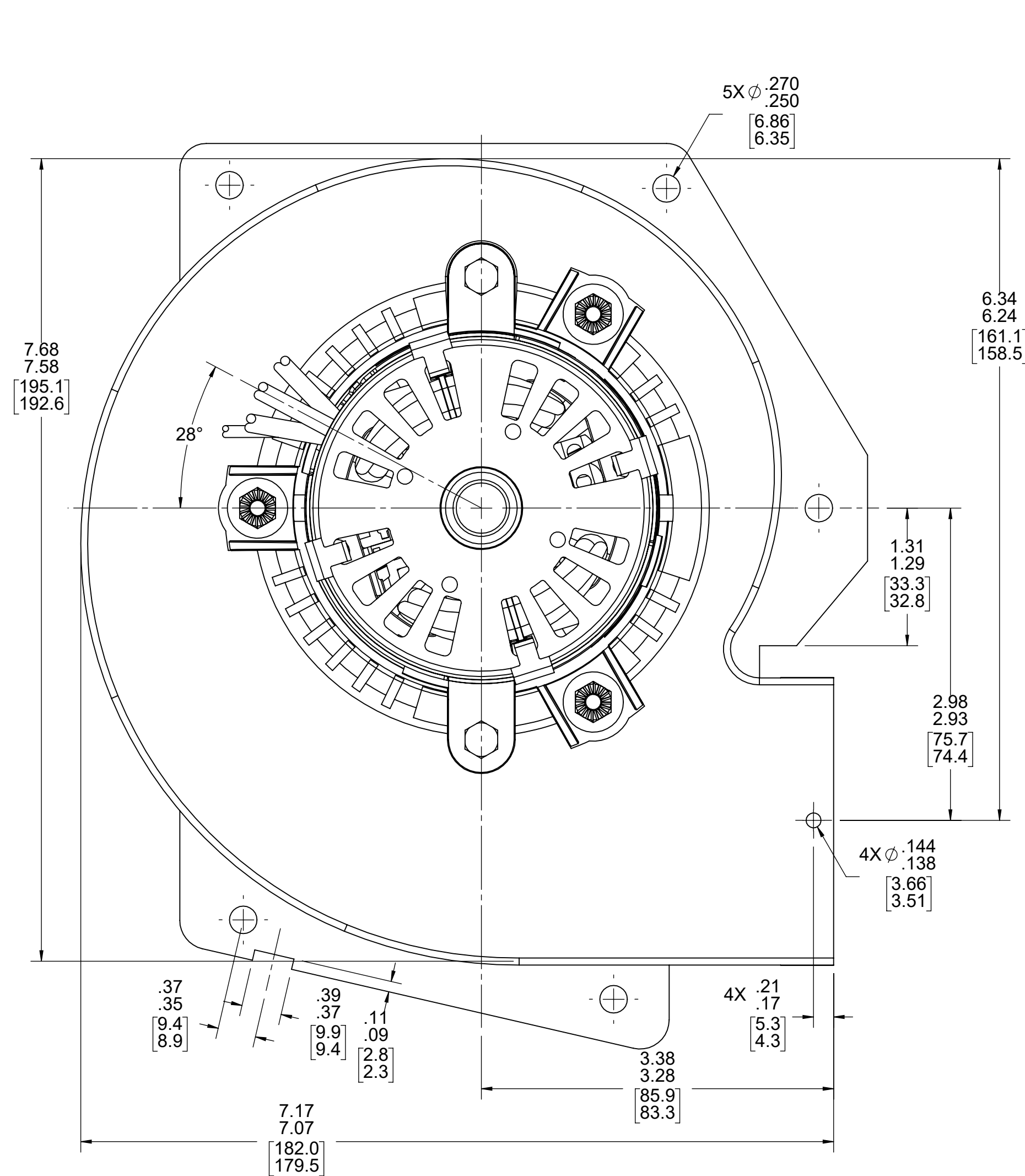
Connection Diagram

Wht — Common

Blk — High

Red — Low

Grn/Yel — Grd



TYPICAL PERFORMANCE TEST DATA WITH 1 5/16" INLET RESTRICTOR AT 115 VOLTS 60 Hz			
	RPM	WATTS	AMPS
HIGH	2830	95.4	1.18
LOW	1296	29.7	.39
BLOWER WEIGHT LBS.			ENDPLAY .030/.010

[illegible]