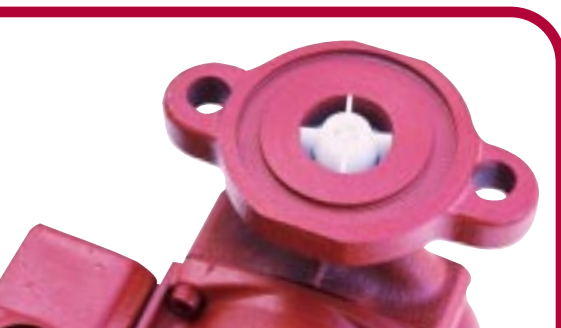


UNIVERSAL PUMP SOLUTION

The New 3-Speed “*SUPER BRUTE*” Circulator

- Eliminates More Than a Dozen Competitive Models
- Less Inventory
- 3 Speed Motor Technology
- Reduces Noise & Power Consumption
- Unique “Removable” Integrated Check Valve
- Minimal Flow Restriction
- Highest Performance & Torque
of any Standard Wet Rotor Circulator
- Ideal for Zoning





Advantages:

- > Zone valve close off reliability can be significantly improved
- > Prevents thermo-siphoning
- > Allows for minimal system flow
- > Provides flexibility in installations
- > Eliminates the expense for an inline check valve

COMPETITIVE CROSS REFERENCE			
B&G	TACO	SA ARMSTRONG	GRUNDFOS
B&G NRF-22	TACO 005	ASTRO30	UP15-42F/FR
B&G NRF-9F/LW	TACO 007		UP15-42FC/FRC
	TACO 008		UPS15-42F/FR
	TACO 007 IFC		UPS15-42FC/FRC
	TACO 008 IFC		

Technical Data:

Flow Range: 0 - 17 U.S. GPM
Head Range: 0 - 19 Feet
Motor: 2 pole, Single Phase
Max. Fluid Temperature Closed System: 230°F (110°C)
Min. Fluid Temperature for UP15: 36°F (2°C)

Minimum Pressure Temp Requirements:

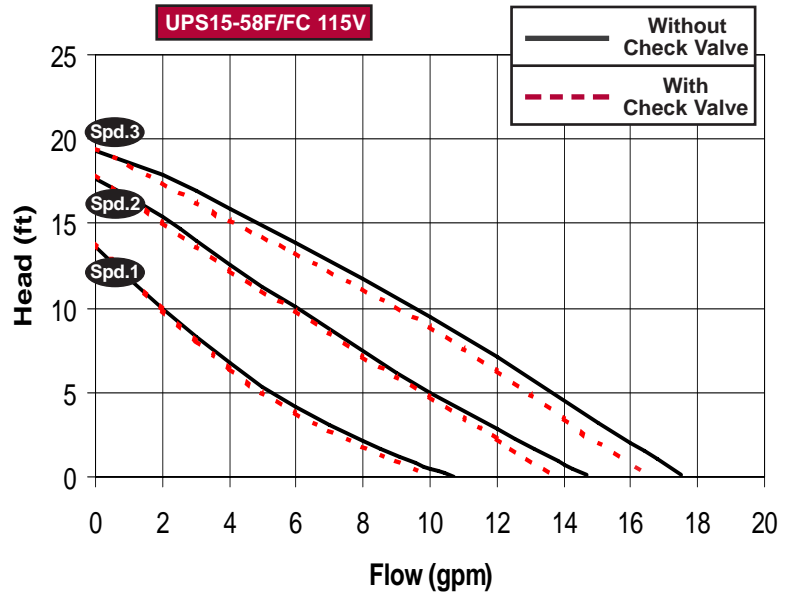
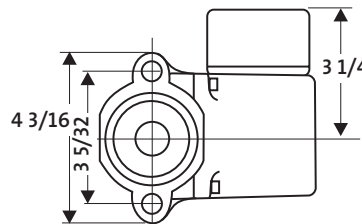
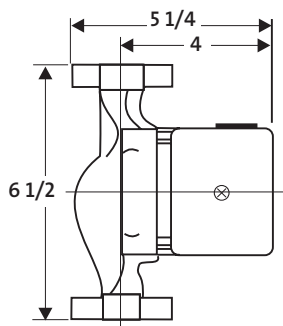
Fluid Temp.	230°F (110°C)	190°F (88°C)	140°F (60°C)
Inlet Pressure	15.6 psi	4.0 psi	1.3 psi

Ambient Air Temp				
90°F (32°C)	130°F (55°C)	140°F (60°C)	160°F (71°C)	175°F (79°C)
Maximum Water Temp				
230°F (110°C)	220°F (104°C)	210°F (99°C)	190°F (88°C)	175°F (79°C)

Note: With Check Valve Max. Fluid Temperature 200°F

Product Data:

MODEL	AMPS	WATTS	CAPACITOR
UPS15-58F Spd. 3 (115V)	.75	89	10mF/180V
Spd. 2	.66	80	---
1/25 HP Spd. 1	.55	60	---



Materials of Construction:

Description	Material
Inlet Cone, Bearing Plate, Bearing Retainers, Rotor Can, Rotor Cladding, Shaft Retainer	304 Stainless Steel
Stator Housing	Aluminum
Shaft, Upper & Lower Radial Bearings	Aluminum Oxide Ceramic
Thrust Bearing	Metal Impregnated Carbon
Check Valve	ACETAL With 302 Stainless Steel Spring & Nitrile Rubber Seats
Pump Housing (Volute)	Cast Iron
O'Ring & Gaskets	EP (Ethylene Propylene Rubber)
Impeller	PES Composite (30% Glass Filled)
Terminal Box	Noryl®

LUPSL027 | 09/02
PRINTED IN USA

When calling for information refer to reference # UPS15-58FC

Grundfos Pumps Corporation
17100 W118th Terrace
Olathe, Kansas 66061
Telephone: (913) 227-3400
Fax: (913) 227-3500

Grundfos Canada, Inc.
2941 Brighton Rd.
Oakville, Ontario L6H 6C9
Telephone: (905) 829-9533
Fax: (905) 829-9512

Bombas Grundfos de Mexico, S.A. de C.V.
Boulevard TLC #15, Parque Industrial Stiva
Aeropuerto
C.P. 66600 Apodaca, N.L. Mexico
Telephone: 52-81-8144-4000
Fax: 52-81-8144-4010