

PRODUCT INFORMATION PACKET

Model No: 5101A

Catalog No: 5101A

Refrigeration Motor, 1/15 HP, 1 Ph, 60/50 Hz, 115 V, 1550 RPM, 3.45 Frame, TEAO



Regal and are trademarks of Regal Rexnord Corporation or one of its affiliated companies.
©2022 Regal Rexnord Corporation, All Rights Reserved. MC017097E

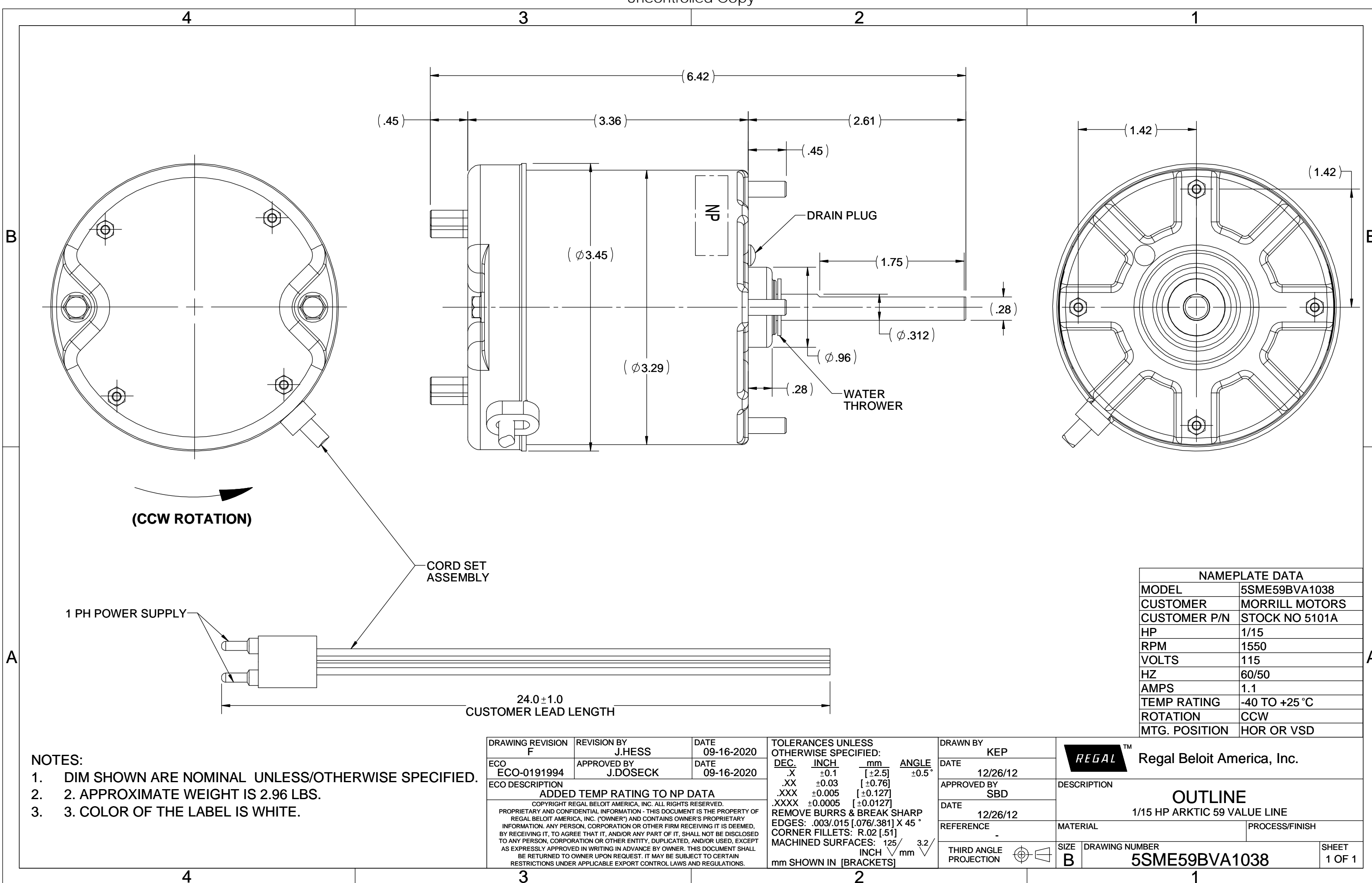
Nameplate Specifications

Output HP	1/15 Hp	Output KW	0.052 kW
Frequency	60/50 Hz	Voltage	115 V
Current	1.1 A	Speed	1550 rpm
Phase	1	Duty	Continuous Air Over
Insulation Class	B	Frame	3.3
Enclosure	Totally Enclosed Air Over	Thermal Protection	Automatic
Ambient Temperature	25 °C	UL	Yes
CSA	Y	CE	N

Technical Specifications

Electrical Type	Electronically Commutated Motor	Starting Method	Across The Line
Poles	4	Rotation	Counterclockwise Opposite Shaft End
Mounting	Extended Studs	Motor Orientation	Horizontal or VSD
Drive End Bearing	Ball	Opp Drive End Bearing	Ball
Frame Material	Rolled Steel	Shaft Type	Flat
Overall Length	6.74 in	Frame Length	3.67 in
Shaft Diameter	0.312 in	Shaft Extension	2.61 in
Outline Drawing	5SME59BVA1038		

This is an uncontrolled document once printed or downloaded and is subject to change without notice. Date Created:09/15/2022



(CCW ROTATION)

CORD SET ASSEMBLY

1 PH POWER SUPPLY

24.0 ± 1.0
CUSTOMER LEAD LENGTH

NAMEPLATE DATA	
MODEL	5SME59BVA1038
CUSTOMER	MORRILL MOTORS
CUSTOMER P/N	STOCK NO 5101A
HP	1/15
RPM	1550
VOLTS	115
HZ	60/50
AMPS	1.1
TEMP RATING	-40 TO +25 °C
ROTATION	CCW
MTG. POSITION	HOR OR VSD

- NOTES:**
1. DIM SHOWN ARE NOMINAL UNLESS/OTHERWISE SPECIFIED.
 2. APPROXIMATE WEIGHT IS 2.96 LBS.
 3. COLOR OF THE LABEL IS WHITE.

DRAWING REVISION F	REVISION BY J.HESS	DATE 09-16-2020
ECO ECO-0191994	APPROVED BY J.DOSECK	DATE 09-16-2020
ECO DESCRIPTION ADDED TEMP RATING TO NP DATA		
<small>COPYRIGHT REGAL BELOIT AMERICA, INC. ALL RIGHTS RESERVED. PROPRIETARY AND CONFIDENTIAL INFORMATION - THIS DOCUMENT IS THE PROPERTY OF REGAL BELOIT AMERICA, INC. (OWNER) AND CONTAINS OWNER'S PROPRIETARY INFORMATION. ANY PERSON, CORPORATION OR OTHER FIRM RECEIVING IT IS DEEMED, BY RECEIVING IT, TO AGREE THAT IT, AND/OR ANY PART OF IT, SHALL NOT BE DISCLOSED TO ANY PERSON, CORPORATION OR OTHER ENTITY, DUPLICATED, AND/OR USED, EXCEPT AS EXPRESSLY APPROVED IN WRITING IN ADVANCE BY OWNER. THIS DOCUMENT SHALL BE RETURNED TO OWNER UPON REQUEST. IT MAY BE SUBJECT TO CERTAIN RESTRICTIONS UNDER APPLICABLE EXPORT CONTROL LAWS AND REGULATIONS.</small>		

TOLERANCES UNLESS OTHERWISE SPECIFIED:			
DEC.	INCH	mm	ANGLE
.X	±0.1	[±2.5]	±0.5°
.XX	±0.03	[±0.76]	
.XXX	±0.005	[±0.127]	
.XXXX	±0.0005	[±0.0127]	
REMOVE BURRS & BREAK SHARP EDGES: .003/.015 [.076/.381] X 45° CORNER FILLETS: R.02 [.51] MACHINED SURFACES: 125 INCH 3.2 mm SHOWN IN [BRACKETS]			

DRAWN BY KEP	DATE 12/26/12
APPROVED BY SBD	DATE 12/26/12
REFERENCE	
THIRD ANGLE PROJECTION	

REGAL ™ Regal Beloit America, Inc.	
DESCRIPTION OUTLINE 1/15 HP ARKTIC 59 VALUE LINE	
MATERIAL	PROCESS/FINISH
SIZE B	DRAWING NUMBER 5SME59BVA1038
	SHEET 1 OF 1