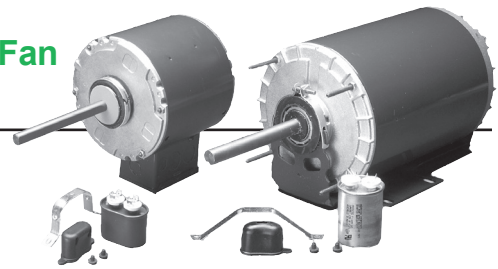


Permanent Split Capacitor Commercial Condenser Fan Open Drip Proof & Totally Enclosed, Air Over



APPLICATIONS:

For use on condenser cooling fans in commercial air conditioning applications.

FEATURES:

- Capacitor and Outlet Box Included, unless noted
- Reversible Rotation
- Double-Sealed Ball Bearings
- Continuous Duty, Air Over
- 208v will not be marked on DOE regulated spread-voltage motors. Refer to online data
- Automatic Reset Thermal Overload Protector
- 60°C Ambient
- Dual Voltage
- Class B Insulation
- **Discount Symbol: DS-3HAC**

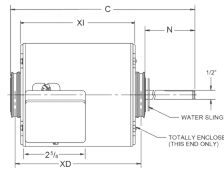


Figure A

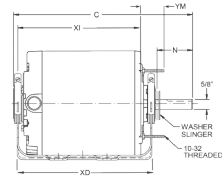


Figure B

5.6" Diameter, All Angle Mounting, Hub Ring Mount (2 1/4") (Fig. A)

HP	RPM/ Spds.	Voltage	Catalog Number	List	Mounting	Cap. MFD	Amps	Shaft N	Base XD	Shell XI	Total C	Stud YM	Ship Wt.	Notes	OEM
1/3	1075	208-230/460	6727*	◆	Hub	5	2.4/1.2	5	5.9	5.3	11.4	N/A	16		
1/2	1075	208-230/460	7475*	◆	Hub	10	2.8/1.4	5	6.4	5.8	11.9	N/A	21		
	1075	208-230/460	2201*	◆	Hub	10	3.2/1.6	5	7.4	6.8	12.8	N/A	19	67	
	1075	208-230	8868	◆	Stud	10	3.8	3.0	-	6.3	9.3	.63	25	98, H15, H44	
	1075	460/400 & 460	8869	◆	Stud	10	1.5	3.0	-	6.3	9.3	.63	18		
	1075/1	575	1177	◆	3 Lug	7.5	1.9	3.0	-	-	8.8	-	18.2	104	
3/4	1075	208-230/460	2202*	◆	Hub	12.5	4.8/2.3	5	8.4	7.8	13.8	N/A	23	66, 67	
	1075	208-230/460	6603	◆	Hub	7.5	5.0/2.5	5	6.9	6.3	12.4	N/A	23	66, H16	
	1075	208-230/460	5489	◆	Hub	7.5	5.0/2.5	5	6.9	6.3	12.3	N/A	19	65, 66, H15	
	1075	460	8233	◆	Band	15.0	2.3	3	6.6	6.0	10.2	N/A	26	65, 66, H15	AA
	1075/1	208-230/460	1254	◆	Band	15	4.6	3.5	-	-	9.8	-	23	98	QU
1	1125	208-230/460	1376	◆	Hub	25	6.1/3.1	5.0	-	6.3	11.3	N/A	24		
	1080	460	8055	◆	Band	15.0	2.5	5.0	-	6.6	11.6	N/A	22	H16, H29	LE
	1075/1	575	1173	◆	Band	25	2.2	6.0	-	-	13.0	-	26.5		

6.3" Diameter, All Angle Mounting, Hub or Stud Mount (4) (Fig. A with 5/8" shaft)

HP	RPM/ Spds.	Voltage	Catalog Number	List	Mounting	Cap. MFD	Amps	Shaft N	Base XD	Shell XI	Total C	Stud YM	Ship Wt.	Notes	OEM
1/2	825	208-230	3568	◆	Band	10.0	3.6	6.0	7.0	6.0	13.4	1.5	27	65, 66, H15	
3/4	1075	208-230	3566	◆	Stud	15.0	3.8	6.0	7.0	6.0	13.4	1.5	27	65, 66, H15	
	825	208-230	3567	◆	Stud	17.5	5.3	6.0	8.2	7.8	14.6	1.5	37	65, 66, H15	
1	1075	208-230	3565	◆	Stud	17.5	5.2	6.0	7.5	6.5	13.9	1.5	29	65, 66, H15	
	1075	208-230/460	2203*	◆	Hub	17.5	5.5-5.4/2.6	6.0	10.4	9.9	16.9	1.5	32	67	
	1075	208-230/460	8431	◆	Stud	12.5	5.8-5.4/2.7	6.0	10.3	9.8	16.4	1.8	32	65, 67	
1-1/2	1075	208-230/460	2204*	◆	Stud	20.0	8.5-7.6/3.8	6.0	10.9	10.4	17.3	1.5	42	67	

6.3" Diameter, Resilient Base (Fig. B)

HP	RPM/ Spds.	Voltage	Catalog Number	List	Mounting	Cap. MFD	Amps	Shaft N	Base XD	Shell XI	Total C	Stud YM	Ship Wt.	Notes	OEM
3/4	1075	208-230/460	2193^	◆	Resilient	30.0	4.8/2.5	4.1	8.25	7.75	13	--	32	H15, H16, 98	
1	1075	208-230/460	2686*	◆	Resilient	17.5	5.1/2.6	5.0	10.45	9.95	15.8	1.5	41	68	
1-1/2	1075	208-230/460	2896*	◆	Resilient	20.0	7.5/3.8	5.0	10.95	10.45	16.3	1.5	45	67, 68	

AA = Aaron LE = Lennox QU = Quantum Precision®†

Note 65: Ventilated (In wet applications, position vent holes at bottom of motor; use rain shield if used shaft up.)

Note 66: No Outlet Box. Includes Leads

Note 67: Capacitor not included, Internal Conduit Box

Note 68: Quick Change Voltage Receptacle, No Outlet Box

Note 98: 50/60 Hertz

Note 104: Conduit Box Included Lugs 7" B.C.

Note H15: Capacitor Not Included

Note H16: CCWLE Rotation Only

Note H29: Includes Rain Shield, Shaft-up Mounting

Note H44: Stud Mount

◆ Refer to Motorboss for Pricing

^ 440 Capacitor

* Totally Enclosed

