

# EXPANDING POLYURETHANE FOAM SEALANT

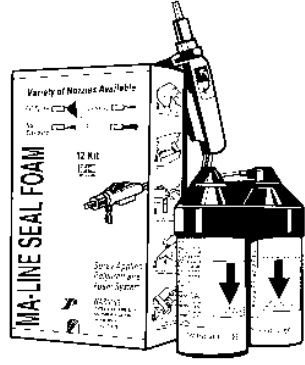
## SINGLE COMPONENT FOAMS



MA-Line Seal Foam is a single component polyurethane foam used as an insulating sealant. Create a durable air tight seal that will minimize air infiltration, outdoor noise, pest infiltration, and the transfer of odors. When applied it reduces the risk of damage from condensation, moisture and ice buildup. Can reduce air conditioning and heating costs because it provides an excellent R-value. MA-Line Seal Foam can provide greater sealing properties compared to other types or styles of sealants. Unlike caulks and other style sealants, MA-Line Seal foam assumes the shape of the cavity and forms an air tight seal. Does not shrink and will retain sealant properties for many years to come. Products are U.L. classified sealants #13655 and Ashrea 90-75 listed.

Part	Description
MA-1-12X	12 oz. Seal-Foam

## TWO COMPONENT FOAMS



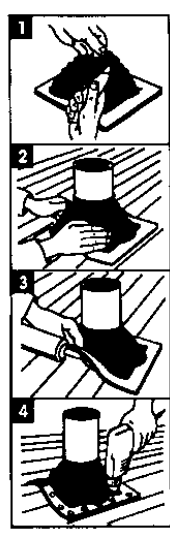
Similar to Seal Foam Single Component Foam, but acts much faster, expands more, and cures much faster. Great for spraying overhead, as it adheres very readily to duct board and sheet metal. Each package provides 12 linear board feet or 1 cubic foot of foam. Ozone friendly closed cell product contains no UREA formaldehyde, sets up in 45 seconds, and cures within 5 minutes.

**OTHER SIZES AVAILABLE BY REQUEST**

Part	Description
MA-11-12X	12 bd. ft. Seal-Foam II

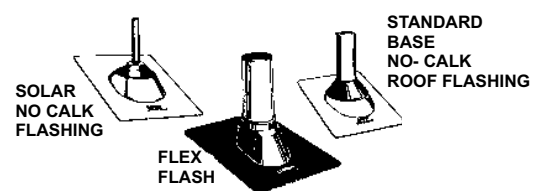
## MASTERFLASH

SIZE RANGE	FLASHING DETAILS	PACK
1/4" - 2" 6mm - 50mm	A = CLOSED B = 1/4" - 2" C = 4 1/8" x 4 1/8"	6
1 1/4" - 3" 38mm - 76mm	A = 7/8" B = 1 1/4" - 3" C = 6" x 6"	6
1 1/4" - 4" 6mm - 102mm	A = CLOSED B = 1/4" - 4" C = 8" x 8"	6
3" - 6" 76mm - 152mm	A = 2 1/2" B = 3" - 6" C = 10" x 10"	6
4" - 7" 102mm - 178mm	A = 3 1/2" B = 4" - 7" C = 11" x 11"	2
5" - 9" 127mm - 228mm	A = 4" B = 5" - 9" C = 12" x 12"	2
6" - 7" 152mm - 203mm	A = 5" B = 6" - 11" C = 14" x 14"	2
7" - 13" 178mm - 330mm	A = 6" B = 7" - 13" C = 17" x 17"	2



Part	Description
MA-14050	1/4"-2"
MA-14051	1-1/4" - 3"
MA-14052	1/4" - 4"
MA-14053	3" - 6"
MA-14054	4" - 7"
MA-14055	5" - 9"
MA-14056	6" - 7"
MA-14057	7" - 13"

## NO-CAULK ROOF FLASHINGS



Exclusive one-piece construction insures a positive leakproof installation every time. Specially formulated elastomeric collar allows the vent stack plenty of room for expansion and contraction. Easy to install, the no-caulk flashing slips over the vent stack and automatically adjusts to pipe size and roof angle, and remains perfectly flat on the roof. Not designed for hot-mopped or built up roofs. All flexible flashings such as MA-14012 and MA-14025 are manufactured from a specially formulated elastomer material which is extremely flexible and durable. They permit the vent stack to expand and contract freely without disrupting the seal between the pipe and flashing collar.

Part	Description
MA-11830	1/2"-3/4"-1" Solar No-Caulk Galvanized Base
MA-11840	1-1/4"-1-1/2" No-Caulk Galvanized Base
MA-11853	2" No-Caulk Galvanized Base
MA-11866	3" No-Caulk Galvanized Base
MA-11879	4" No-Caulk Galvanized Base
MA-14012	2" All-Flexible, Rubber Base
MA-14025	2-1/2" All-Flexible, Rubber Bas

## BLACK FLASHING CEMENT

ALL WEATHER-NEVER HARDENS  
Meets Federal Specifications #SS-C-153C



MA-Line Flashing Cement now comes in a 12.8 oz. tube/cartridge that is perfect for your caulking gun. This all weather flashing cement compound never hardens, and meets Federal specification #SS-C-153. 12 tubes per case. Sold by the case only.

Part	Description	Case
MA-BFC	Black Flashing Cement 12.8 oz. Cartridge	12

## BLACK FLASHING CEMENT

ALL WEATHER-NEVER HARDENS  
Meets Federal Specifications #SS-C-153C



Part	Description	Case
MA-BF1	Black Flashing Cement Compound 1 Gal.	4