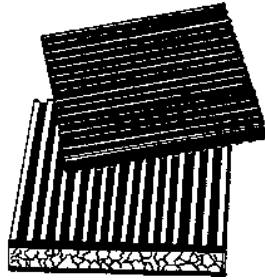


## ANTI-VIBRATION PADS

To prolong machine life, reduce maintenance cost and dampen vibration. Resists: water, aging, oil & compression set.

Recommended maximum load capacity: 50 pounds per square inch.



Part	Description	Ctn
<b>CORK &amp; RUBBER PADS</b>		
MA-002CR	2" x 2" x 7/8" Cork/Rubber	48
MA-003CR	3" x 3" x 7/8" Cork/Rubber	36
MA-004CR	4" x 4" x 7/8" Cork/Rubber	24
MA-006CR	6" x 6" x 7/8" Cork/Rubber	24
MA-012CR	12" x 12" x 7/8" Cork/Rubber	6
MA-018CR	18" x 18" x 7/8" Cork/Rubber	6
<b>ALL RUBBER PADS</b>		
MA-002RR	2" x 2" x 3/8" All Rubber	48
MA-003RR	3" x 3" x 3/8" All Rubber	36
MA-004RR	4" x 4" x 3/8" All Rubber	24
MA-006RR	6" x 6" x 3/8" All Rubber	24
MA-012RR	12" x 12" x 3/8" All Rubber	12
MA-018RR	18" x 18" x 3/8" All Rubber	6

## FLEXIBLE GAS CONNECTORS AGA & CGA CERTIFIED



### COATED STAINLESS STEEL

**Description:** An indoor/outdoor gas connector for **Residential and Commercial gas appliances**, not subject to frequent movement. Operating Temperature: -40 deg to 150 deg. CSA-approved for indoor and outdoor use. **Polymer coating** resists sea salt, UV rays, harsh chemical residue and building products such as solder flux, muriatic acid, ammonia and chlorine.

### 3/8" I.D. TUBE

Part	Description	Length
MA-CSSD54-12	1/2"FIP x 1/2"MIP	12" long
MA-CSSD54-18	1/2"FIP x 1/2"MIP	18" long
MA-CSSD54-24	1/2"FIP x 1/2"MIP	24" long
MA-CSSD54-36	1/2"FIP x 1/2"MIP	36" long
MA-CSSD54-48	1/2"FIP x 1/2"MIP	48" long
MA-CSSD54-60	1/2"FIP x 1/2"MIP	60" long
MA-CSSD54-72	1/2"FIP x 1/2"MIP	72" long

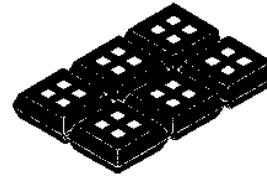
### 1/2" I.D. TUBE

Part	Description	Length
MA-CSSC21-12	3/4"FIP x 3/4"MIP	12" long
MA-CSSC21-18	3/4"FIP x 3/4"MIP	18" long
MA-CSSC21-24	3/4"FIP x 3/4"MIP	24" long
MA-CSSC21-36	3/4"FIP x 3/4"MIP	36" long
MA-CSSC21-48	3/4"FIP x 3/4"MIP	48" long
MA-CSSC21-60	3/4"FIP x 3/4"MIP	60" long
MA-CSSC21-72	3/4"FIP x 3/4"MIP	72" long

### 1/2" I.D. TUBE

Part	Description	Length
MA-CSSC54-12	1/2"FIP x 1/2"MIP	12" long
MA-CSSC54-18	1/2"FIP x 1/2"MIP	18" long
MA-CSSC54-24	1/2"FIP x 1/2"MIP	24" long
MA-CSSC54-36	1/2"FIP x 1/2"MIP	36" long
MA-CSSC54-48	1/2"FIP x 1/2"MIP	48" long
MA-CSSC54-60	1/2"FIP x 1/2"MIP	60" long
MA-CSSC54-72	1/2"FIP x 1/2"MIP	72" long

## NATURAL RUBBER VIBRATION PADS MOUNTING PADS

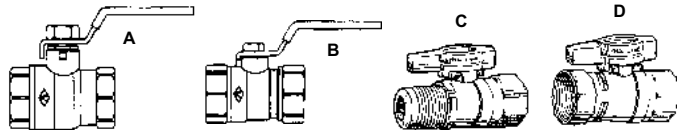


Part	Description	Sheets/Ctn	Sq/Sheet
MA-181838	18" x 18" x 3/8" Pad	12	81
MA-181834	18" x 18" x 3/4" Pad	6	81

## GAS BALL VALVES

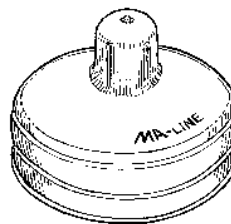
### ALL MODELS HAVE AGA, UL, AND CSA APPROVALS

Lever handle forged brass ball valves. Standard port, full port 600 PSI, W.O.G., 150 PSI saturated steam.



Part	Description
MA-73101	1/2" OD x 1/2" FPT Straight (C)
MA-73102	5/8" OD Flare x 3/4" FPT (C)
MA-73105	3/8" FPT x 3/8" FPT (D)
MA-73103	1/2" FPT x 1/2" FPT (D)
MA-73104	3/4" FPT x 3/4" FPT (D)
MA-73106	1" FPT x 1" FPT (D)
MA-73107	1-1/4" FPT x 1-1/4" FPT Standard Port (B)
MA-73108	1-1/2" FPT x 1-1/2" FPT Standard Port (B)
MA-73109	2" FPT x 2" FPT Standard Port (B)
MA-73110	1-1/4" FPT x 1-1/4" FPT Full Port (A)
MA-73111	1-1/2" FPT x 1-1/2" FPT Full Port (A)
MA-73112	2" FPT x 2" FPT Full Port (A)

## MAXICAP COVERS

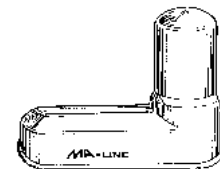


Put the lid on call-backs. Not only does the Maxicap prevent regulator lockup due to ice and snow blockage of the vent, it also prevents insects or buildups of mud and debris from clogging the vent. Black in color.

### MAXICAP3R, MAXICAP5R

#### FEATURES:

- Inexpensive and effective
- Maintains vent limit protection
- Simple installation
- No tools required
- UV Safe
- Patent pending



### MAXICAP7R

Part	Description
MAXICAP3R	Rubber Weather Cover Fits Maxitrol 325-3 Series Regulator
MAXICAP5R	Rubber Weather Cover Fits Maxitrol 325-5 Series Regulators
MAXICAP7R	Rubber Weather Cover Fits Maxitrol 325-7 and 210D Series Regulators