

STAINLESS STEEL WELDER'S "TOOTHBRUSH"



8" OVERALL WOODEN HANDLE

Part Description
MA-20534 Stainless Steel Welder's "Toothbrush"

BRASS WELDER'S "TOOTHBRUSH"

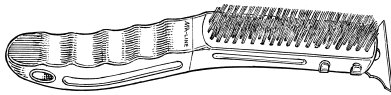


7" OVERALL WOODEN HANDLE

Part Description
AMA-254 Brass Welder's "Toothbrush"

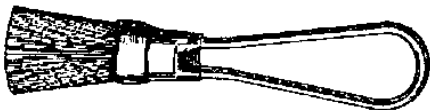
GRILL CLEANING BRUSH WITH SCRAPPER

STAINLESS STEEL BRISTLES
 RUBBER GRIP



Part Description
MA-46810 Grill Cleaning Brush

STAINLESS WIRE BRUSH



Part Description
AMA-816 Stainless Wire Brush

VARNISH BRUSH



Part Description
AMA-503 2" Polyester Varnish Brush
AMA-505 3" Polyester Varnish Brush

OIL OR CHIP BRUSH



Part Description
AMA-481 Oil or Chip Brush

WIRE BRUSHES

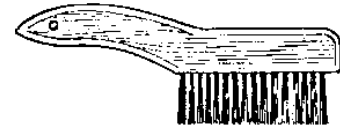


CARBON STEEL CURVED HANDLE

Part Description
AMA-010 14" Hardwood Handle / Tempered Steel Bristles

STAINLESS STEEL CURVED HANDLE

Part Description
AMA-018 14" Hardwood Handle / Stainless Steel Bristles

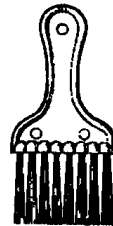


CARBON STEEL SHOE HANDLE

Part Description
AMA-017 10" Hardwood Handle / Tempered Steel Bristles

CONDENSER FIN WHISK BRUSH

Plastic handle whisk for cleaning condenser fins and evaporators.



Part Description
AMA-026 Condenser Fin Whisk Brush

REFRIGERATOR COIL CLEANING BRUSH



Brush Length 15"
 Wood Handle—12" long
 Overall Length 27"

Part Description
AMA-405 Refrigerator Coil Cleaning Brush

NEW PARTS CLEANING BRUSH



Part Description
AMA-015 New Parts Cleaning Brush
 All Poly brush material,
 Overall length 10-3/4"

RADIATOR CLEANING BRUSH



Overall Length 24"
 Brush Length 9"
 Black Horsehair

Part Description
AMA-020 Radiator Cleaning Brush