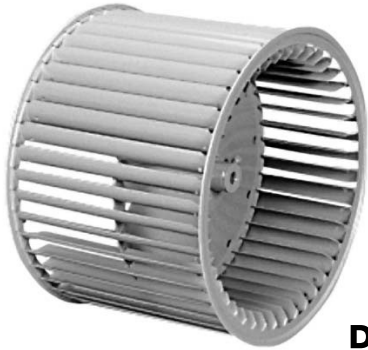


BLOWER WHEELS

Double Inlet, Direct Drive



Lau's Universal Replacement Wheel



- Galvanized, Universal Replacement wheels
- 9"–11" double inlet with precise blade spacing and consistency in alignment and balance
- Quiet performance, forward curved wheel
- Preslok® Center disc with a special hub for use with direct drive blowers

DOUBLE INLET, DIRECT DRIVE WHEELS

Part Number	Lau Model	Bore Size	Rot.	Center Disc.	Max. RPM	D	W	X	U	Z	H
01333401	DD 9-4A	1/2"	CW	Convex	1750	9 1/2	4 1/2	7 11/16	1 1/4	1 25/32	43
01333501	DD 9-6A	1/2"	CW	Convex	1750	9 1/2	6	7 11/16	1 1/4	1 25/32	43
01333602	DD 9-7A	1/2"	CW	Convex	1750	9 1/2	7 1/8	7 11/16	1 1/4	1 25/32	43
01333603	DD 9-7A	1/2"	CCW	Convex	1750	9 1/2	7 1/8	7 11/16	1 1/4	1 25/32	43
01333701	DD 9-8A	1/2"	CW	Convex	1750	9 1/2	8	7 11/16	1 1/4	1 25/32	43
01333703	DD 9-8A	1/2"	CCW	Convex	1750	9 1/2	8	7 11/16	1 1/4	1 25/32	43
01333201	DD 9-9A	1/2"	CW	Concave	1750	9 1/2	9 1/2	7 11/16	1 1/4	7/32	43
01333203	DD 9-9A	1/2"	CCW	Concave	1750	9 1/2	9 1/2	7 11/16	1 1/4	7/32	43
01332701	DD10-4A	1/2"	CW	Convex	1750	10 5/8	4 1/2	8 7/8	1 1/4	1 15/16	48
01332601	DD10-6A	1/2"	CW	Convex	1750	10 5/8	6	8 7/8	1 1/4	1 15/16	48
01332602	DD10-6A	1/2"	CCW	Convex	1750	10 5/8	6	8 7/8	1 1/4	1 15/16	48
01332614	DD10-6A	5/8"	CW	Convex	1750	10 5/8	6	8 7/8	1 1/4	1 15/16	48
01332501	DD10-7A	1/2"	CW	Convex	1750	10 5/8	7 1/8	8 7/8	1 1/4	1 15/16	48
02710204	DD10-7A	1/2"	CCW	Convex	1750	10 5/8	7 1/8	8 7/8	1 1/4	1 15/16	48
01332401	DD10-8A	1/2"	CW	Convex	1750	10 5/8	8	8 7/8	1 1/4	1 15/16	48
01332402	DD10-8A	1/2"	CCW	Convex	1750	10 5/8	8	8 7/8	1 1/4	1 15/16	48
01331701	DD10-9A	1/2"	CW	Concave	1750	10 5/8	9 1/2	8 7/8	1 1/4	1/16	48
01331704	DD10-9A	1/2"	CCW	Concave	1750	10 5/8	9 1/2	8 7/8	1 1/4	1/16	48
01332301	DD10-9A	1/2"	CW	Convex	1750	10 5/8	9 1/2	8 7/8	1 1/4	1 15/16	48
01331602	DD10-10A	1/2"	CW	Concave	1750	10 5/8	10 5/8	8 7/8	1 1/4	1/16	48
01332203	DD10-10A	1/2"	CW	Convex	1750	10 5/8	10 5/8	8 7/8	1 1/4	1 15/16	48
01331606	DD10-10A	1/2"	CCW	Concave	1750	10 5/8	10 5/8	8 7/8	1 1/4	1/16	48
02694003	DD11-6A	1/2"	CW	Convex	1550	11 3/4	6	10	1 1/4	2	53
02694005	DD11-7A	1/2"	CW	Convex	1550	11 3/4	7 1/8	10	1 1/4	2	53
02694007	DD11-8A	1/2"	CW	Convex	1550	11 3/4	8	10	1 1/4	2	53
02694107	DD11-8A	1/2"	CW	Concave	1550	11 3/4	8	10	1 1/4	1/16	53
02694008	DD11-8A	1/2"	CCW	Convex	1550	11 3/4	8	10	1 1/4	2	53

TEMPERATURE: Due to temperature limitations of most motors, these wheels are recommended for application temperatures that do not exceed 135°F (60°C). Wheels are rated to 200°F.

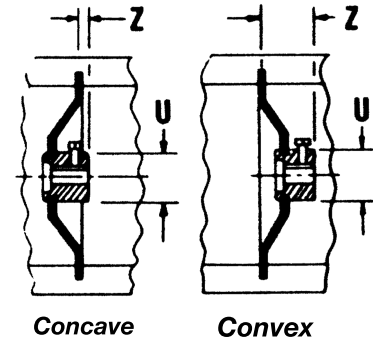
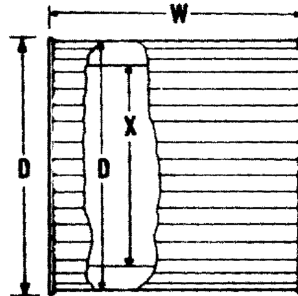
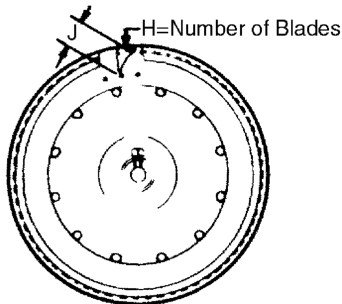
Continued on next page.

Specifications are subject to change without notice or obligation

DOUBLE INLET, DIRECT DRIVE WHEELS

Part Number	Lau Model	Bore Size	Rot.	Center Disc.	Max. RPM	D	W	X	U	Z	H
02694009	DD11-9A	1/2"	CW	Convex	1550	11 ³ / ₄	9 ¹ / ₂	10	1 ¹ / ₄	2	53
02694010	DD11-9A	1/2"	CCW	Convex	1550	11 ³ / ₄	9 ¹ / ₂	10	1 ¹ / ₄	2	53
02694111	DD11-10A	1/2"	CW	Concave	1550	11 ³ / ₄	10 ⁵ / ₈	10	1 ¹ / ₄	1/16	53
02694112	DD11-10A	1/2"	CCW	Concave	1550	11 ³ / ₄	10 ⁵ / ₈	10	1 ¹ / ₄	1/16	53
01369325	DD12-9A	1/2"	CW	Convex	1200	12 ⁵ / ₈	9 ¹ / ₂	10 ⁵ / ₁₆	1 ¹ / ₄	2	43
01369315	DD12-9A	5/8"	CW	Convex	1200	12 ⁵ / ₈	9 ¹ / ₂	10 ⁵ / ₁₆	1 ¹ / ₄	2	43
01556507	DD12-12A	1/2"	CW	Concave	1200	12 ⁵ / ₈	12 ⁵ / ₈	10 ⁵ / ₁₆	1 ¹ / ₄	1/16	43
01556504	DD12-12A	5/8"	CW	Concave	1200	12 ⁵ / ₈	12 ⁵ / ₈	10 ⁵ / ₁₆	1 ¹ / ₄	1/16	43

TEMPERATURE: Due to temperature limitations of most motors, these wheels are recommended for application temperatures that do not exceed 135°F (60°C). Wheels are rated to 200°F.



- J = 1" on all models through 11"
- J = 1⁵/₁₆" on 12" and 15" models
- J = 1¹⁵/₁₆" on 18" and 20" models

SERVICE TIP

If opposite rotation is required, mount motor on hub side. Setscrew must be converted to Allen head screw and then tightened through the blades, using a "T" Allen wrench. (You may have to notch blade above setscrew to provide access for "T" Allen wrench.)



For higher RPM capability see Torque Guide Chart on Page 60.



Call your Customer Service Representative today for applications requiring galvanized wheels!!