

## Zero to 90™ Connectors

For use with non-metallic liquid tight conduit, type B only. Produced from UV rated plastic for long outdoor life.

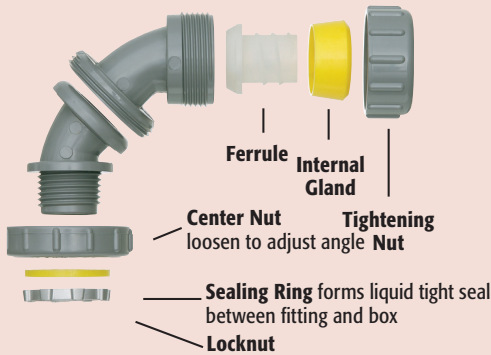
CATALOG NUMBER	UPC/DCI/NAED MFG #018997	TRADE SIZE	KO SIZE	UNIT PKG	STD PKG	DIM A	DIM B	DIM C	DIM D
NMLT5090	06240	1/2	1/2	10	50	2.765	1.945	2.324	2.387
NMLT7590	06260	3/4	3/4	10	50	3.540	2.590	3.250	2.820



MADE IN USA.

Add suffix "BL" to Catalog # when ordering in black, for example NMLT5090BL.

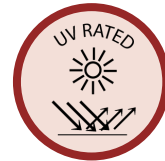
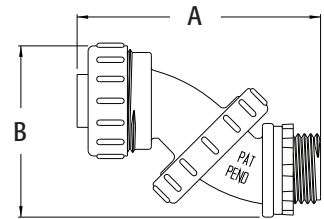
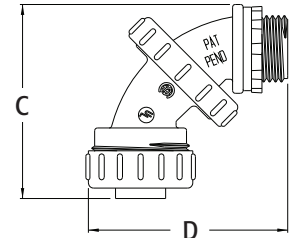
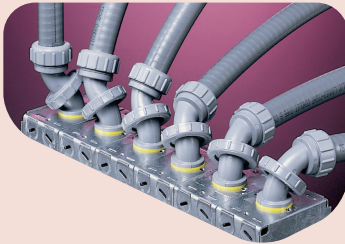
### INSTALLATION INSTRUCTIONS



### Adjusts for ALL ANGLES... from 0° to 90°!

Arlington's no spin ferrule allows the Zero to 90 connector to be secured to the conduit while fully assembled. To install, simply loosen the tightening nut and screw onto conduit. A positive liquid tight seal is formed by the pressure sensitive internal gland as the nut is tightened. The sealing ring assures a liquid tight seal between the fitting and box.

To adjust the angle simply loosen the center nut, twist to the correct angle, and re-tighten.



**COSTS THE SAME AS OUR "REGULAR" 90° FITTING!**

LIQUID TIGHT