



Mueller Streamline Co. Headquarters

150 Schilling Blvd
Suite 201
Collierville, Tennessee 38017
United States
Phone: 901 753 3200

Mueller Streamline Co. International

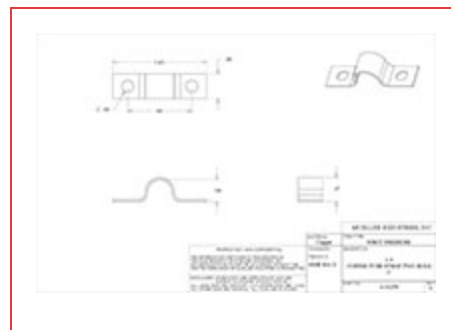
525 Okeechobee Blvd
Suite 860
West Palm Beach, FL 33401
United States
Phone: 561 273 8300

ITEM # A 01278, COPPER TUBE STRAP TWO-HOLE, C, 1/4"

Streamline® Copper Solder-Joint Fittings for supply/pressurized systems have been the leading brand of copper fittings for over 80 years. Available in both wrought copper and cast bronze, our product selection has grown to become the most extensive in the industry. We are the acknowledged experts at engineering and manufacturing precision solder-joint copper fittings. Quality, consistency and reliability have made the Streamline® brand trusted and specified all around the world.

- For use in above-

[+ more](#)



[Specifications](#) | [Dimensions](#) | [Details](#)

Specifications

Weight 0.01 lb

Material WROT COPPER

Operating Temperature[CDA-Copper-Fitting-Pressue-Temp-Ratings](#)**Operating Pressure**[CDA-Copper-Fitting-Pressue-Temp-Ratings](#)**End Size**

1/4 in

Standards

NSF 61G
 ASME B16.15
 ASME B16.18
 ASME B16.22
 ASME B16.24
 ASME B16.50
 ASME B1.20.1

Dimensions**Overall Length**

1.50 in

Overall Height

0.41 in

Overall Width

0.38 in

Details**Style**

WS-1100

Qty Pcs / Bag

100

Master Qty Pcs / Box

5600

Mueller Description 1

1/4 NOM TUBE STRAP

Mueller Description 2

3/8 OD TUBE STRAP