



Caxton®

21-1/4" oval undermount bathroom sink
K-2211

Features

- Oval basin with unglazed underside
- Overflow drain
- No faucet holes; requires wall- or counter-mount faucet
- Unglazed underside

Material

- Vitreous china

Installation

- Undermount

Recommended Products/Accessories

K-8998 P-Trap
K-23726 Drain treatment
K-23725 Cast iron cleaner

Included Components

1193643 Basin clamps



ADA

Codes/Standards




ASME A112.19.2/CSA B45.1
ADA
ICC/ANSI A117.1

KOHLER® Vitreous China Bathroom Sink Lifetime Limited Warranty

See website for detailed warranty information.

Available Colors/Finishes

Color tiles intended for reference only.

Color	Code	Description
	0	White
	96	Biscuit
	7	Black Black™

1-800-4KOHLER (1-800-456-4537)

Kohler Co. reserves the right to make revisions without notice to product specifications.

For the most current Specification Sheet, go to www.kohler.com USA or www.kohler.ca Canada

2-17-2025 20:53 - US/CA

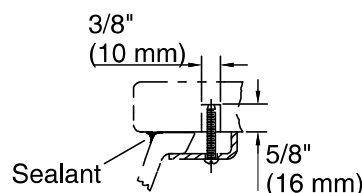
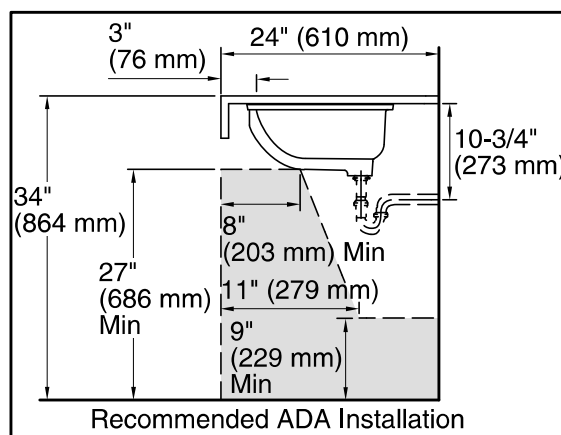
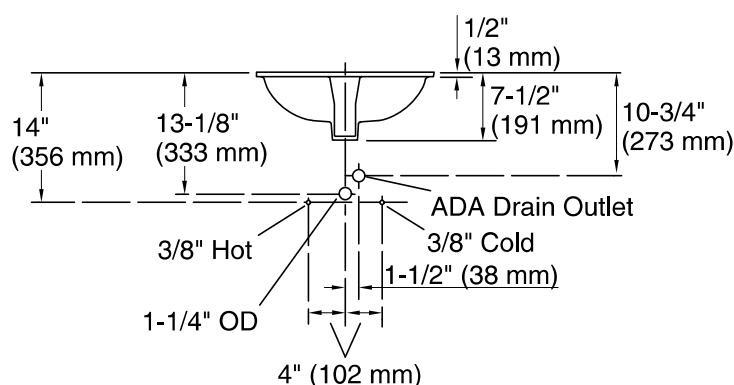
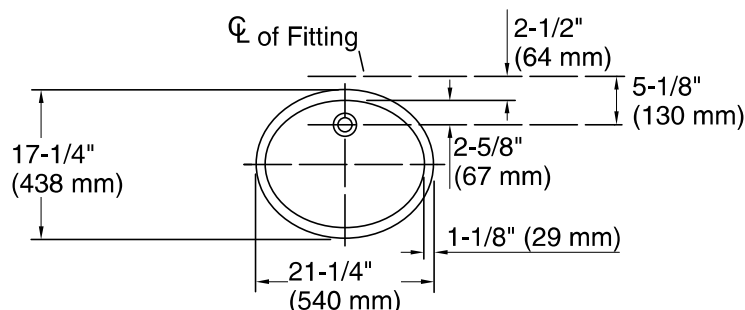
THE BOLD LOOK
OF **KOHLER®**

KOHLER®

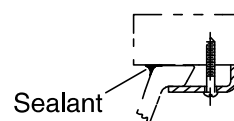
Caxton®

21-1/4" oval undermount bathroom sink

K-2211



Marble Installation



Wood Installation

Technical Information

Technical Information
All product dimensions are nominal.

Basin configuration: Single Bowl

Bowl area: Length: 19" (483 mm)
Width: 15" (381 mm)
Water depth: 4" (102 mm)

With overflow: Yes

Drain hole: 1-3/4" (44 mm)

Template: 1018997-7, required, not included

Notes

Notes
Install this product according to the installation instructions.

NOTICE: Countertop manufacturer or cutter must use the current product template available at www.kohler.com, or by calling 1-800-4KOHLER. Kohler Co. is not responsible for cutout errors when the incorrect cutout template is used.

ADA compliant when installed to the specific requirements of these regulations.