



COMMERCIAL HEAVY DUTY

Product Specifications

| | |
|-------------------|-------------------|
| Shape | Elongated |
| Seat Material | Polypropylene |
| Seat Form | Open front |
| Commercial Hinge | Yes |
| Bolt Material | Zinc plated steel |
| Hardware Material | Plastic |
| Check Hinge | Yes |
| Cover | No |
| Custom Gasket | Yes |
| Color | Black |

Warranty 1 year limited warranty



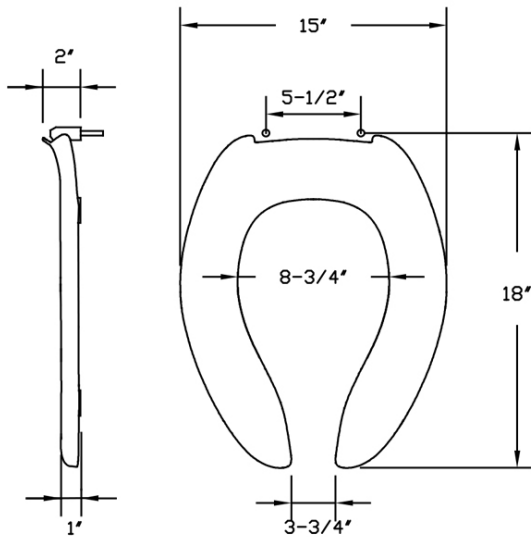
Available Colors

White, crane white, black,

Features

Commercial Hinge

Includes commercial grade hinges. One piece solid metal hinge pin and bolt over molded with plastic.



Dimensions shown are nominal and may vary within a range of tolerance. Product specifications are subject to change without notice.