



OLYMPIA FAUCETS, INC.
3325 S. Garfield Ave.
Commerce, CA 90040
(888) 772-7701
www.olympiafaucets.com

INSTALLATION

Tools:



Adjustable Wrench



Plumbers Putty



Teflon Tape



Rags

Model Number: K-416X, K-417X



Warnings and Notes:

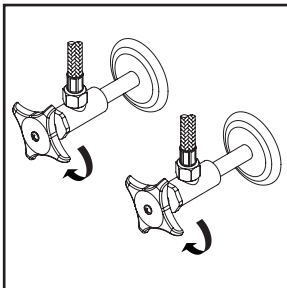
Check with local plumbing code requirements before installation.

This product should be installed by a local listed plumber.

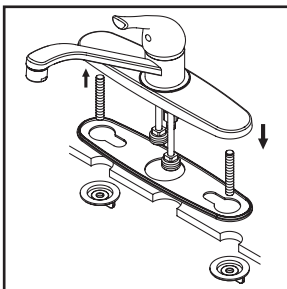
Do not use plumbers putty on threads.

Installation Steps:

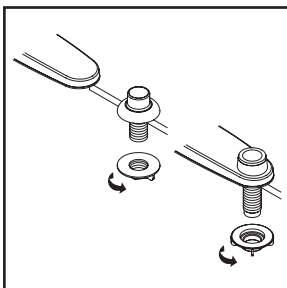
Single Handle Kitchen Faucet



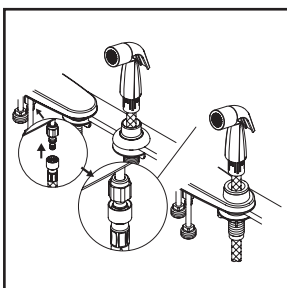
(1) Shut off the water supply. Remove old faucet. Clean mounting surface in preparation for new faucet.



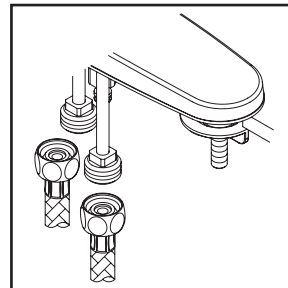
(2) Apply adequate plumbers putty along the boundary of base gasket. Thread mounting bolts to the bottom of faucet. Align faucet with mounting holes and place faucet on the sink, thread locknut onto mounting bolts from underneath the sink, hand tighten locknuts. Go to step (5) if faucet is without side spray.



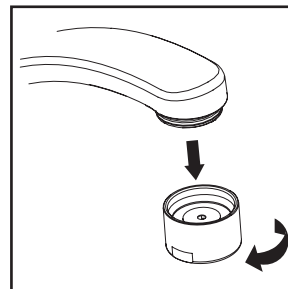
(3) Place side spray holder on mounting hole. Tighten locknut from underneath the sink to secure the side spray holder.



(4) Guide the side spray hose through the side spray holder. Insert the side spray hose quick connect adapter into faucet outlet end, push until a "click" is heard. Pull side spray hose downward to test engagement.



(5) When using stainless steel braided faucet supply hoses; one end of the supply hose is required to have a 1/2" female IPS connection. The other end of this supply hose must match the thread on the water supply valve under your sink. Once you've identified the required size, carefully follow the manufacturer's installation instructions for each hose.



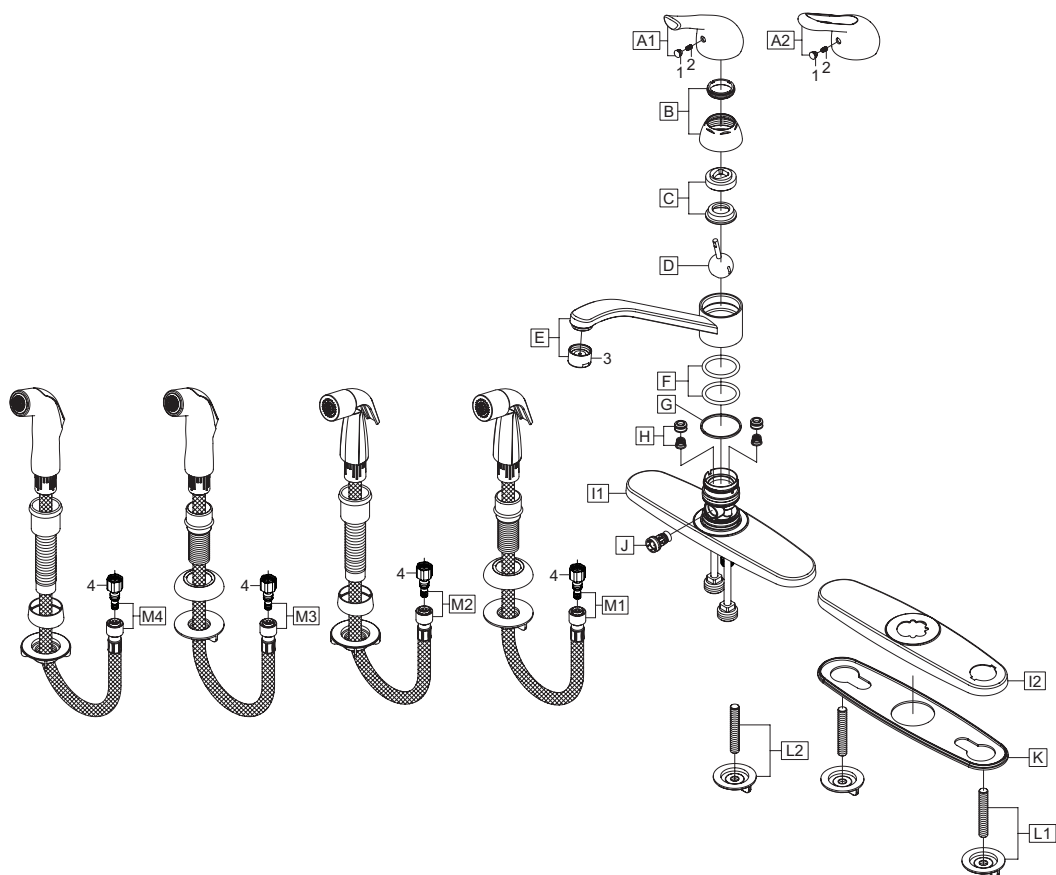
(6) Important: After installation is complete, remove the aerator. Turn on the water and allow both hot and cold water to run for at least one minute each. While water is running, check for leaks. Turn off the water and replace the aerator when finished.

Exploded Drawing:

* Note: Please specify finish/color when ordering.

| | ITEM # | DESCRIPTION |
|----|------------|--|
| K | OP-420004 | Base Gasket |
| L1 | OP-520003 | Mounting Bolts & Nuts (For K-4160, K-4161, K-4162, K-4170, K-4171) |
| L2 | OP-520002 | Mounting Bolt & Nut (For K-4163, K-4164) |
| M1 | OP-420078* | Side Spray Assembly (For K-41X1) |
| M2 | OP-420079 | Side Spray Assembly (For K-4163) |
| M3 | OP-420077* | Side Spray Assembly (For K-4162) |
| M4 | OP-420080 | Side Spray Assembly (For K-4164) |
| 1 | OP-490002 | Hot & Cold Indicator |
| 2 | OP-490043 | Allen Screw |
| 3 | OP-490035* | 1.5 GPM Aerator |
| 4 | OP-420083 | Quick Connect Adapter |

| | ITEM # | DESCRIPTION |
|----|------------|---|
| A1 | OP-190001* | Metal Lever Handle (For K-416X) |
| A2 | OP-190002* | Metal Loop Handle (For K-417X) |
| B | OP-490003* | Cap & Adjusting Ring |
| C | OP-490004 | Cam and Washer |
| D | OP-390001 | Stainless Steel Ball |
| E | OP-220001* | 'D' Style Spout |
| F | OP-420001 | O-Rings |
| G | OP-420002 | Gasket |
| H | OP-490041 | Springs and Seats |
| I1 | OP-420003* | Deck Plate (For K-4160, K-4161, K-4162, K-417X) |
| I2 | OP-420006 | Deck Plate (For K-4163, K-4164) |
| J | OP-420005 | Diverter Piston (For K-4161, K-4162, K-4163, K-4164, K-4171) |



OLYMPIA

For more care information or trouble shooting inquiries about your Olympia product, Please call:
OLYMPIA FAUCETS, INC. (888) 772-7701
 Monday-Friday 8 AM to 8 PM EST (5 AM to 5 PM PST)
www.olympiafaucets.com